

NF2 / Merlin Antibody

Rabbit mAb

Catalog # AP91380

Product Information

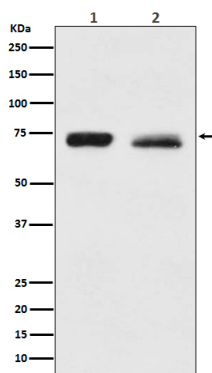
Application	WB, IP
Primary Accession	P35240
Reactivity	Rat, Human, Mouse
Clonality	Monoclonal
Other Names	ACN; BANF; Merlin; Moesin ezrin radixin like protein; Neurofibromatosis 2; Neurofibromin 2; Nf2; SCH; Schwannomerlin;
Isotype	Rabbit IgG
Host	Rabbit
Calculated MW	70 KDa

Additional Information

Dilution	WB 1:1000~1:5000 IP 1:50
Purification	Affinity-chromatography
Immunogen	A synthesized peptide derived from human NF2 / Merlin
Description	Probable regulator of the Hippo/SWH (Sav/Wts/Hpo) signaling pathway, a signaling pathway that plays a pivotal role in tumor suppression by restricting proliferation and promoting apoptosis.
Storage Condition and Buffer	Rabbit IgG in phosphate buffered saline , pH 7.4, 150mM NaCl, 0.02% sodium azide and 50% glycerol. Store at +4°C short term. Store at -20°C long term. Avoid freeze / thaw cycle.

Protein Information

Images



Western blot analysis of NF2 / Merlin expression in (1) HeLa cell lysate; (2) PC3 cell lysate.

Please note: All products are 'FOR RESEARCH USE ONLY. NOT FOR USE IN DIAGNOSTIC OR THERAPEUTIC PROCEDURES'.