

Golgin 97 Antibody

Rabbit mAb

Catalog # AP91365

Product Information

Application	WB, IP
Primary Accession	Q92805
Reactivity	Human
Clonality	Monoclonal
Other Names	Gap junction protein alpha 4 37kD; GOLGA1; Golgi autoantigen golgin subfamily a 1; Golgin A1; Golgin subfamily A member 1; Golgin97;
Isotype	Rabbit IgG
Host	Rabbit
Calculated MW	88184

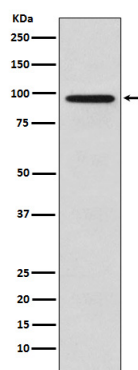
Additional Information

Dilution	WB 1:1000~1:5000 IP 1:30
Purification	Affinity-chromatography
Immunogen	A synthesized peptide derived from human Golgin 97
Description	The Golgi-associated protein golgin A1 (GOLGA1, golgin-97) was first isolated as a Golgi complex autoantigen associated with the autoimmune disorder Sjogren's syndrome. The golgin-97 protein contains a carboxy-terminal GRIP domain and is a commonly used trans-Golgi network (TGN) marker.
Storage Condition and Buffer	Rabbit IgG in phosphate buffered saline , pH 7.4, 150mM NaCl, 0.02% sodium azide and 50% glycerol. Store at +4°C short term. Store at -20°C long term. Avoid freeze / thaw cycle.

Protein Information

Name	GOLGA1
Function	Involved in vesicular trafficking at the Golgi apparatus level. Involved in endosome-to-Golgi trafficking. Mechanistically, captures transport vesicles arriving from endosomes via the protein TBC1D23 (PubMed: 29084197 , PubMed: 38552021). Recognized vesicles are then tethered to the trans-Golgi before subsequent SNARE engagement and vesicle fusion. Selectively regulates E-cadherin transport from the trans-Golgi network in tubulovesicular carriers (PubMed: 34969853).
Cellular Location	Golgi apparatus membrane; Peripheral membrane protein. Golgi apparatus, trans-Golgi network membrane Cytoplasmic vesicle, secretory vesicle, acrosome {ECO:0000250 UniProtKB:Q9CW79}

Images



Western blot analysis of Golgin 97 expression in HeLa cell lysate.

Please note: All products are 'FOR RESEARCH USE ONLY. NOT FOR USE IN DIAGNOSTIC OR THERAPEUTIC PROCEDURES'.