

CDT1 Antibody

Rabbit mAb

Catalog # AP91361

Product Information

Application	WB, IHC, IF, ICC, IP, IHF
Primary Accession	Q9H211
Reactivity	Human
Clonality	Monoclonal
Other Names	CDT 1; Chromatin licensing and DNA replication factor 1; Retroviral integration site 2; RIS2;
Isotype	Rabbit IgG
Host	Rabbit
Calculated MW	60390

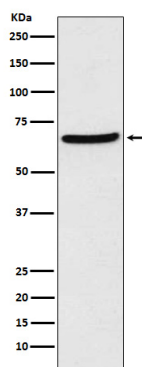
Additional Information

Dilution	WB 1:500~1:1000 IHC 1:50~1:200 ICC/IF 1:50~1:200 IP 1:50
Purification	Affinity-chromatography
Immunogen	A synthesized peptide derived from human CDT1
Description	Cooperates with CDC6 to promote the loading of the mini-chromosome maintenance complex onto chromatin to form the pre-replication complex necessary to initiate DNA replication. Binds DNA in a sequence-, strand-, and conformation-independent manner. Potential oncogene.
Storage Condition and Buffer	Rabbit IgG in phosphate buffered saline , pH 7.4, 150mM NaCl, 0.02% sodium azide and 50% glycerol. Store at +4°C short term. Store at -20°C long term. Avoid freeze / thaw cycle.

Protein Information

Name	CDT1 {ECO:0000312 EMBL:AAG45181.1}
Function	Required for both DNA replication and mitosis (PubMed: 11125146 , PubMed: 14993212 , PubMed: 21856198 , PubMed: 22581055 , PubMed: 26842564). DNA replication licensing factor, required for pre-replication complex assembly. Cooperates with CDC6 and the origin recognition complex (ORC) during G1 phase of the cell cycle to promote the loading of the mini-chromosome maintenance (MCM) complex onto DNA to generate pre-replication complexes (pre-RC) (PubMed: 14672932). Required also for mitosis by promoting stable kinetochore-microtubule attachments (PubMed: 22581055). Potential oncogene (By similarity).
Cellular Location	Nucleus. Chromosome, centromere, kinetochore. Note=Transiently localizes to kinetochores during prometaphase and metaphase

Images



Western blot analysis of CDT1 expression in HEK293 cell lysate.

Please note: All products are 'FOR RESEARCH USE ONLY. NOT FOR USE IN DIAGNOSTIC OR THERAPEUTIC PROCEDURES'.