

# LMO2 Antibody

Rabbit mAb

Catalog # AP91349

## Product Information

---

<b>Application</b>	WB, FC, IP
<b>Primary Accession</b>	<a href="#">P25791</a>
<b>Reactivity</b>	Rat, Human, Mouse
<b>Clonality</b>	Monoclonal
<b>Other Names</b>	Cysteine rich protein TTG 2; LIM domain only 2 (rhombotin like 1); lmo2; RBTN 2; RBTNL1; RHOM 2; Rhombotin 2; TTG 2;
<b>Isotype</b>	Rabbit IgG
<b>Host</b>	Rabbit
<b>Calculated MW</b>	18358

## Additional Information

---

<b>Dilution</b>	WB 1:500~1:2000 IP 1:100 FC 1:100
<b>Purification</b>	Affinity-chromatography
<b>Immunogen</b>	A synthesized peptide derived from human LMO2
<b>Description</b>	Acts with TAL1/SCL to regulate red blood cell development. Also acts with LDB1 to maintain erythroid precursors in an immature state.
<b>Storage Condition and Buffer</b>	Rabbit IgG in phosphate buffered saline , pH 7.4, 150mM NaCl, 0.02% sodium azide and 50% glycerol. Store at +4°C short term. Store at -20°C long term. Avoid freeze / thaw cycle.

## Protein Information

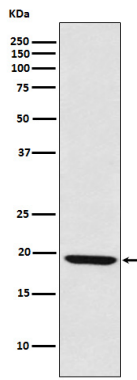
---

<b>Name</b>	LMO2
<b>Synonyms</b>	RBTN2, RBTNL1, RHOM2, TTG2
<b>Function</b>	Acts with TAL1/SCL to regulate red blood cell development. Also acts with LDB1 to maintain erythroid precursors in an immature state.
<b>Cellular Location</b>	Nucleus.

## Images

---

Western blot analysis of LMO2 expression in Raji cell lysate.



Please note: All products are 'FOR RESEARCH USE ONLY. NOT FOR USE IN DIAGNOSTIC OR THERAPEUTIC PROCEDURES'.