

# BNIP1 Antibody

Rabbit mAb

Catalog # AP91333

## Product Information

<b>Application</b>	WB, IHC
<b>Primary Accession</b>	<a href="#">Q12981</a>
<b>Reactivity</b>	Rat, Human, Mouse
<b>Clonality</b>	Monoclonal
<b>Other Names</b>	BCL2 adenovirus E1B 19kD interacting protein 1; BNIP1; Nip1; sec20; SEC20L; Transformation-related gene 8 protein; TRG8; Vesicle transport protein SEC20;
<b>Isotype</b>	Rabbit IgG
<b>Host</b>	Rabbit
<b>Calculated MW</b>	26132

## Additional Information

<b>Dilution</b>	WB 1:500~1:2000 IHC 1:50~1:200
<b>Purification</b>	Affinity-chromatography
<b>Immunogen</b>	A synthesized peptide derived from human BNIP1
<b>Description</b>	SNARE that may be involved in targeting and fusion of Golgi-derived retrograde transport vesicles with the ER. Required for maintenance of ER network. Implicated in the suppression of cell death.
<b>Storage Condition and Buffer</b>	Rabbit IgG in phosphate buffered saline , pH 7.4, 150mM NaCl, 0.02% sodium azide and 50% glycerol. Store at +4°C short term. Store at -20°C long term. Avoid freeze / thaw cycle.

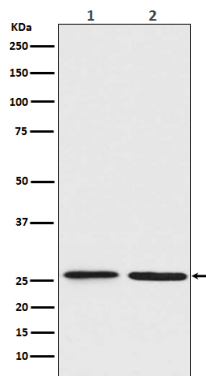
## Protein Information

<b>Name</b>	BNIP1
<b>Synonyms</b>	NIP1, SEC20L
<b>Function</b>	As part of a SNARE complex may be involved in endoplasmic reticulum membranes fusion and be required for the maintenance of endoplasmic reticulum organization (PubMed: <a href="#">15272311</a> ). Also plays a role in apoptosis (PubMed: <a href="#">15272311</a> , PubMed: <a href="#">23896122</a> , PubMed: <a href="#">7954800</a> ). It is for instance required for endoplasmic reticulum stress-induced apoptosis (PubMed: <a href="#">23896122</a> ). As a substrate of RNF185 interacting with SQSTM1, might also be involved in mitochondrial autophagy (Probable).
<b>Cellular Location</b>	Endoplasmic reticulum membrane; Single-pass type IV membrane protein. Mitochondrion membrane; Single-pass type IV membrane protein. Note=Localization to the mitochondrion is regulated by RNF186.
<b>Tissue Location</b>	Isoform 1 is highly expressed in heart, brain, liver skeletal muscle and

pancreas. Isoform 3 is moderately expressed in placenta, lung and kidney. Isoform 4 is highly expressed in testis and small intestine.

## Images

---



Western blot analysis of BNIP1 expression in (1) Jurkat cell lysate; (2) C6 cell lysate.

Please note: All products are 'FOR RESEARCH USE ONLY. NOT FOR USE IN DIAGNOSTIC OR THERAPEUTIC PROCEDURES'.