

Human IgG Antibody

Rabbit mAb

Catalog # AP91330

Product Information

Application	WB, IHC
Primary Accession	P01857/P01859/P01860/P01861
Reactivity	Human
Clonality	Monoclonal
Other Names	G1m marker; G2m marker; G3m marker; G4m marker; HDC; Heavy chain disease protein; Human immunoglobulin G; Ig gamma 1 chain C region; Ig gamma 2 chain C region; Ig gamma 3 chain C region; Ig gamma 4 chain C region; IgG heavy chain locus; IGHG1; IGHG2; IGHG3; IGHG4;
Isotype	Rabbit IgG
Host	Rabbit
Calculated MW	52 KDa

Additional Information

Dilution	WB 1:500~1:2000 IHC 1:50~1:200
Purification	Affinity-chromatography
Immunogen	A synthesized peptide derived from human Human IgG
Description	IgG is a monomeric immunoglobulin, built of two heavy chains gamma and two light chains. Each molecule has two antigen binding sites. This is the most abundant immunoglobulin and is approximately equally distributed in blood and in tissue liquids, constituting 75% of serum immunoglobulins in humans.
Storage Condition and Buffer	Rabbit IgG in phosphate buffered saline , pH 7.4, 150mM NaCl, 0.02% sodium azide and 50% glycerol. Store at +4°C short term. Store at -20°C long term. Avoid freeze / thaw cycle.

Protein Information

Images

Western blot analysis of Human IgG expression in Human plasma lysate.

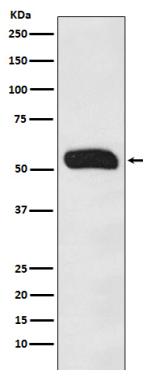


Image not found : 202311/AP91330-IHC.jpg

Immunohistochemical analysis of paraffin-embedded human spleen, using Human IgG Antibody.

Please note: All products are 'FOR RESEARCH USE ONLY. NOT FOR USE IN DIAGNOSTIC OR THERAPEUTIC PROCEDURES'.