

delta Sarcoglycan Antibody

Rabbit mAb

Catalog # AP91321

Product Information

Application	WB, IHC, IP
Primary Accession	Q92629
Reactivity	Human
Clonality	Monoclonal
Other Names	35DAG; CMD1L; DAGD; Delta-sarcoglycan; LGMD2F; SG delta; SGCD; SGCDP;
Isotype	Rabbit IgG
Host	Rabbit
Calculated MW	32071

Additional Information

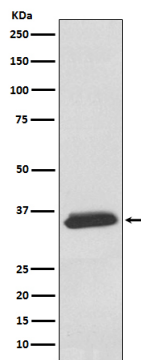
Dilution	WB 1:500~1:2000 IHC 1:50~1:200 IP 1:50
Purification	Affinity-chromatography
Immunogen	A synthesized peptide derived from human delta Sarcoglycan
Description	Component of the sarcoglycan complex, a subcomplex of the dystrophin-glycoprotein complex which forms a link between the F-actin cytoskeleton and the extracellular matrix.
Storage Condition and Buffer	Rabbit IgG in phosphate buffered saline , pH 7.4, 150mM NaCl, 0.02% sodium azide and 50% glycerol. Store at +4°C short term. Store at -20°C long term. Avoid freeze / thaw cycle.

Protein Information

Name	SGCD
Function	Component of the sarcoglycan complex, a subcomplex of the dystrophin-glycoprotein complex which forms a link between the F-actin cytoskeleton and the extracellular matrix.
Cellular Location	Cell membrane, sarcolemma; Single-pass type II membrane protein. Cytoplasm, cytoskeleton
Tissue Location	Most strongly expressed in skeletal and cardiac muscle. Also detected in smooth muscle. Weak expression in brain and lung

Images

Western blot analysis of delta Sarcoglycan expression in Human fetal heart lysate.



Please note: All products are 'FOR RESEARCH USE ONLY. NOT FOR USE IN DIAGNOSTIC OR THERAPEUTIC PROCEDURES'.