

Clathrin heavy chain Antibody

Rabbit mAb

Catalog # AP91292

Product Information

Application	WB, IHC, IF, ICC, IHF
Primary Accession	Q00610/P53675
Reactivity	Rat, Human, Mouse
Clonality	Monoclonal
Other Names	CHC17; Clathrin heavy chain; Clathrin heavy chain like 1; CLH17; CLH22; CLTC; CLTCL; CLTD;
Isotype	Rabbit IgG
Host	Rabbit
Calculated MW	191 KDa

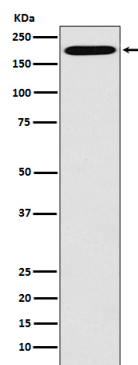
Additional Information

Dilution	WB 1:1000~1:5000 IHC 1:50~1:200
Purification	Affinity-chromatography
Immunogen	A synthesized peptide derived from human Clathrin heavy chain
Description	Clathrin heavy chain proteins are composed of several functional domains, including a carboxy-terminal region that permits interaction with other heavy chain proteins within a triskelion, and a globular amino-terminal region that associates with other vesicle proteins. Adaptor proteins, such as AP2, epsin and EPS15, are responsible for the recruitment of vesicle proteins to sites of pit formation and the assembly of the clathrin-coated vesicle.
Storage Condition and Buffer	Rabbit IgG in phosphate buffered saline , pH 7.4, 150mM NaCl, 0.02% sodium azide and 50% glycerol. Store at +4°C short term. Store at -20°C long term. Avoid freeze / thaw cycle.

Protein Information

Images

Western blot analysis of Clathrin heavy chain expression in Hela cell lysate.



Please note: All products are 'FOR RESEARCH USE ONLY. NOT FOR USE IN DIAGNOSTIC OR THERAPEUTIC PROCEDURES'.