

# SDHB Antibody

Rabbit mAb

Catalog # AP91290

## Product Information

<b>Application</b>	WB, IHC, FC, IP
<b>Primary Accession</b>	<a href="#">P21912</a>
<b>Reactivity</b>	Rat, Human, Mouse
<b>Clonality</b>	Monoclonal
<b>Other Names</b>	Iron-sulfur subunit of complex II; SDHB; SDH; SDH1; PGL4;
<b>Isotype</b>	Rabbit IgG
<b>Host</b>	Rabbit
<b>Calculated MW</b>	31630

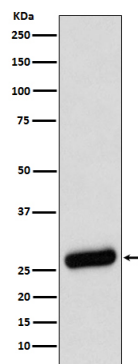
## Additional Information

<b>Dilution</b>	WB 1:500~1:2000 IHC 1:50~1:200 IP 1:50 FC 1:50
<b>Purification</b>	Affinity-chromatography
<b>Immunogen</b>	A synthesized peptide derived from human SDHB
<b>Description</b>	Iron-sulfur protein (IP) subunit of succinate dehydrogenase (SDH) that is involved in complex II of the mitochondrial electron transport chain and is responsible for transferring electrons from succinate to ubiquinone (coenzyme Q).
<b>Storage Condition and Buffer</b>	Rabbit IgG in phosphate buffered saline , pH 7.4, 150mM NaCl, 0.02% sodium azide and 50% glycerol. Store at +4°C short term. Store at -20°C long term. Avoid freeze / thaw cycle.

## Protein Information

<b>Name</b>	SDHB
<b>Synonyms</b>	SDH, SDH1
<b>Function</b>	Iron-sulfur protein (IP) subunit of the succinate dehydrogenase complex (mitochondrial respiratory chain complex II), responsible for transferring electrons from succinate to ubiquinone (coenzyme Q) (PubMed: <a href="#">26925370</a> , PubMed: <a href="#">27604842</a> ). SDH also oxidizes malate to the non-canonical enol form of oxaloacetate, enol- oxaloacetate (By similarity). Enol-oxaloacetate, which is a potent inhibitor of the succinate dehydrogenase activity, is further isomerized into keto-oxaloacetate (By similarity).
<b>Cellular Location</b>	Mitochondrion inner membrane; Peripheral membrane protein; Matrix side

## Images



Western blot analysis of SDHB expression in A431 cell lysate.

Please note: All products are 'FOR RESEARCH USE ONLY. NOT FOR USE IN DIAGNOSTIC OR THERAPEUTIC PROCEDURES'.