

NFAT2 Antibody

Rabbit mAb

Catalog # AP91285

Product Information

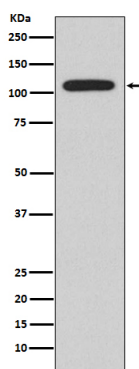
Application	WB, IF, FC, ICC
Primary Accession	O95644
Reactivity	Human
Clonality	Monoclonal
Other Names	cytoplasmic 1; NF ATc; NF ATc1; NF-ATc; NF-ATc1; NFAC1; NFAT 2; NFAT2; NFATC 1; NFATc; NFATc1;
Isotype	Rabbit IgG
Host	Rabbit
Calculated MW	101 KDa

Additional Information

Dilution	WB 1:500~1:2000 ICC/IF 1:50~1:200 FC 1:50
Purification	Affinity-chromatography
Immunogen	A synthesized peptide derived from human NFAT2
Description	NFAT proteins are predominantly expressed in cells of the immune system, but are also expressed in skeletal muscle, keratinocytes, and adipocytes, regulating cell differentiation programs in these cells.
Storage Condition and Buffer	Rabbit IgG in phosphate buffered saline , pH 7.4, 150mM NaCl, 0.02% sodium azide and 50% glycerol. Store at +4°C short term. Store at -20°C long term. Avoid freeze / thaw cycle.

Protein Information

Images



Western blot analysis of NFAT2 expression in Ramos cell lysate.

Please note: All products are 'FOR RESEARCH USE ONLY. NOT FOR USE IN DIAGNOSTIC OR THERAPEUTIC PROCEDURES'.