

# Serum Amyloid A Antibody

Rabbit mAb

Catalog # AP91257

## Product Information

---

<b>Application</b>	WB, IHC
<b>Primary Accession</b>	<a href="#">PODJI8</a>
<b>Reactivity</b>	Human
<b>Clonality</b>	Monoclonal
<b>Other Names</b>	Amyloid fibril protein AA; Amyloid fibrils; Amyloid protein A; Fibrils; PIG4; SAA 1; SAA 2; Serum amyloid A protein precursor;
<b>Isotype</b>	Rabbit IgG
<b>Host</b>	Rabbit
<b>Calculated MW</b>	13546

## Additional Information

---

<b>Dilution</b>	WB 1:500~1:2000 IHC 1:50~1:200
<b>Purification</b>	Affinity-chromatography
<b>Immunogen</b>	A synthesized peptide derived from human Serum Amyloid A
<b>Description</b>	Major acute phase reactant. Apolipoprotein of the HDL complex.
<b>Storage Condition and Buffer</b>	Rabbit IgG in phosphate buffered saline , pH 7.4, 150mM NaCl, 0.02% sodium azide and 50% glycerol. Store at +4°C short term. Store at -20°C long term. Avoid freeze / thaw cycle.

## Protein Information

---

<b>Name</b>	SAA1
<b>Function</b>	Major acute phase protein.
<b>Cellular Location</b>	Secreted.
<b>Tissue Location</b>	Expressed by the liver; secreted in plasma (at protein level).

## Images

---

Western blot analysis of Serum Amyloid A expression in human plasma lysate.

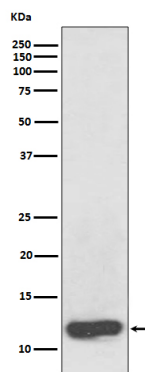


Image not found : 202311/AP91257-IHC.jpg

Immunohistochemical analysis of paraffin-embedded human liver cancer, using Serum Amyloid A Antibody.

Please note: All products are 'FOR RESEARCH USE ONLY. NOT FOR USE IN DIAGNOSTIC OR THERAPEUTIC PROCEDURES'.