

# LY6A Antibody

Rabbit mAb

Catalog # AP91238

## Product Information

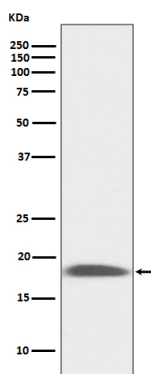
<b>Application</b>	WB, IHC
<b>Primary Accession</b>	<a href="#">P05533(mouse)</a>
<b>Reactivity</b>	Mouse
<b>Clonality</b>	Monoclonal
<b>Other Names</b>	Ly-6A.2/Ly-6E.1; Ly6a; Ly6al; Lymphocyte antigen 6A-2/6E-1; Lymphocyte antigen Ly 6A.2/Ly 6E.1; SCA-1; Stem cell antigen 1; T cell activating protein; TAP;
<b>Isotype</b>	Rabbit IgG
<b>Host</b>	Rabbit
<b>Calculated MW</b>	18 KDa

## Additional Information

<b>Dilution</b>	WB 1:500~1:2000 IHC 1:50~1:200
<b>Purification</b>	Affinity-chromatography
<b>Immunogen</b>	A synthesized peptide derived from human LY6A
<b>Description</b>	T-cell activation.
<b>Storage Condition and Buffer</b>	Rabbit IgG in phosphate buffered saline , pH 7.4, 150mM NaCl, 0.02% sodium azide and 50% glycerol. Store at +4°C short term. Store at -20°C long term. Avoid freeze / thaw cycle.

## Protein Information

## Images



Western blot analysis of LY6A expression in mouse kidney lysate.

Please note: All products are 'FOR RESEARCH USE ONLY. NOT FOR USE IN DIAGNOSTIC OR THERAPEUTIC PROCEDURES'.