

CREM Antibody (C-term)

Purified Rabbit Polyclonal Antibody (Pab)

Catalog # AP9122b

Product Information

Application	WB, FC, E
Primary Accession	Q03060
Other Accession	Q03061 , P27699 , Q1LZH5
Reactivity	Human
Predicted	Bovine, Mouse, Rat
Host	Rabbit
Clonality	Polyclonal
Isotype	Rabbit IgG
Clone Names	RB17919
Calculated MW	37006
Antigen Region	287-314

Additional Information

Gene ID	1390
Other Names	cAMP-responsive element modulator, Inducible cAMP early repressor, ICER, CREM
Target/Specificity	This CREM antibody is generated from rabbits immunized with a KLH conjugated synthetic peptide between 287-314 amino acids from the C-terminal region of human CREM.
Dilution	WB~~1:1000 FC~~1:10~50 E~~Use at an assay dependent concentration.
Format	Purified polyclonal antibody supplied in PBS with 0.09% (W/V) sodium azide. This antibody is prepared by Saturated Ammonium Sulfate (SAS) precipitation followed by dialysis against PBS.
Storage	Maintain refrigerated at 2-8°C for up to 2 weeks. For long term storage store at -20°C in small aliquots to prevent freeze-thaw cycles.
Precautions	CREM Antibody (C-term) is for research use only and not for use in diagnostic or therapeutic procedures.

Protein Information

Name	CREM (HGNC:2352)
Function	Transcriptional regulator that binds the cAMP response element (CRE), a sequence present in many viral and cellular promoters. Isoforms are either

transcriptional activators or repressors. Plays a role in spermatogenesis and is involved in spermatid maturation (PubMed:[10373550](#)).

Cellular Location

Nucleus.

Tissue Location

Expressed in testes (round spermatids) (at protein level). Isoform 14 is the major activator form in testes

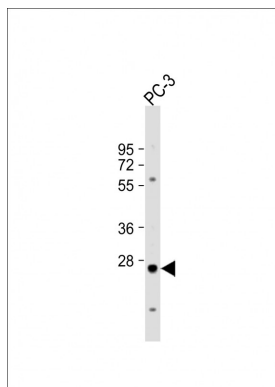
Background

CREM is a bZIP transcription factor that binds to the cAMP responsive element found in many viral and cellular promoters. It is an important component of cAMP-mediated signal transduction during the spermatogenetic cycle, as well as other complex processes.

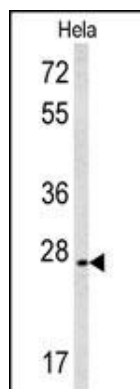
References

Fujimoto,T., et.al., J. Biochem. 115 (2), 298-303 (1994)

Images

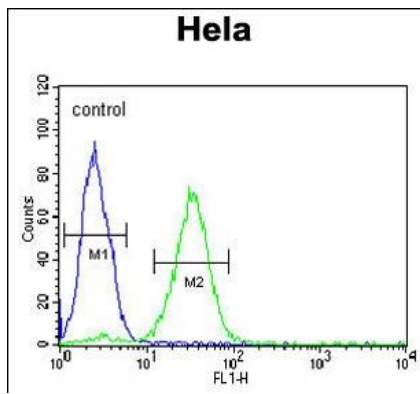


Anti-CREM Antibody (C-term) at 1:1000 dilution + PC-3 whole cell lysate Lysates/proteins at 20 µg per lane. Secondary Goat Anti-Rabbit IgG, (H+L), Peroxidase conjugated at 1/10000 dilution. Predicted band size : 39 kDa Blocking/Dilution buffer: 5% NFDM/TBST.



Western blot analysis of CREM Antibody (C-term) (Cat. #AP9122b) in HeLa cell line lysates (35ug/lane). CREM (arrow) was detected using the purified Pab.

CREM Antibody (C-term) (Cat. #AP9122b) flow cytometric analysis of HeLa cells (right histogram) compared to a negative control cell (left histogram).FITC-conjugated goat-anti-rabbit secondary antibodies were used for the analysis.



Please note: All products are 'FOR RESEARCH USE ONLY. NOT FOR USE IN DIAGNOSTIC OR THERAPEUTIC PROCEDURES'.