

# Claudin 5 Antibody

Rabbit mAb

Catalog # AP91223

## Product Information

<b>Application</b>	WB, IHC
<b>Primary Accession</b>	<a href="#">O00501</a>
<b>Reactivity</b>	Human
<b>Clonality</b>	Monoclonal
<b>Other Names</b>	Claudin5; Transmembrane protein deleted in VCFS; BEC1; CPETRL1; TMDVCF; CLDN5; AWAL; TMVCF;
<b>Isotype</b>	Rabbit IgG
<b>Host</b>	Rabbit
<b>Calculated MW</b>	23147

## Additional Information

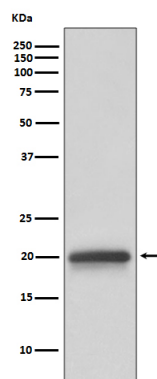
<b>Dilution</b>	WB 1:500~1:2000 IHC 1:50~1:200
<b>Purification</b>	Affinity-chromatography
<b>Immunogen</b>	A synthesized peptide derived from human Claudin 5
<b>Description</b>	Plays a major role in tight junction-specific obliteration of the intercellular space.
<b>Storage Condition and Buffer</b>	Rabbit IgG in phosphate buffered saline , pH 7.4, 150mM NaCl, 0.02% sodium azide and 50% glycerol. Store at +4°C short term. Store at -20°C long term. Avoid freeze / thaw cycle.

## Protein Information

<b>Name</b>	CLDN5
<b>Synonyms</b>	AWAL, TMVCF
<b>Function</b>	Plays a major role in tight junction-specific obliteration of the intercellular space.
<b>Cellular Location</b>	Cell junction, tight junction. Cell membrane {ECO:0000250 UniProtKB:O54942}; Multi-pass membrane protein

## Images

Western blot analysis of Claudin 5 expression in human fetal brain lysate.



Please note: All products are 'FOR RESEARCH USE ONLY. NOT FOR USE IN DIAGNOSTIC OR THERAPEUTIC PROCEDURES'.