

Syndecan 1 Antibody

Rabbit mAb

Catalog # AP91222

Product Information

Application	WB, IHC, IF, ICC, IHF
Primary Accession	P18827
Reactivity	Rat, Human, Mouse
Clonality	Monoclonal
Other Names	CD138; CD138 antigen; heparan sulfate proteoglycan fibroblast growth factor receptor; Sdc1; SYND1; Syndecan 1; syndecan proteoglycan 1;
Isotype	Rabbit IgG
Host	Rabbit
Calculated MW	32462

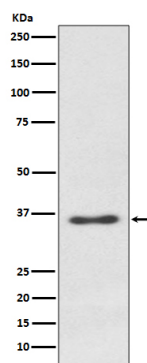
Additional Information

Dilution	WB 1:500~1:2000 IHC 1:100~1:500 ICC/IF 1:50~1:200
Purification	Affinity-chromatography
Immunogen	A synthesized peptide derived from human Syndecan 1
Description	Cell surface proteoglycan that bears both heparan sulfate and chondroitin sulfate and that links the cytoskeleton to the interstitial matrix.
Storage Condition and Buffer	Rabbit IgG in phosphate buffered saline , pH 7.4, 150mM NaCl, 0.02% sodium azide and 50% glycerol. Store at +4°C short term. Store at -20°C long term. Avoid freeze / thaw cycle.

Protein Information

Name	SDC1 (HGNC:10658)
Synonyms	SDC
Function	Cell surface proteoglycan that contains both heparan sulfate and chondroitin sulfate and that links the cytoskeleton to the interstitial matrix (By similarity). Regulates exosome biogenesis in concert with SDCBP and PDGFR (PubMed: 22660413). Able to induce its own expression in dental mesenchymal cells and also in the neighboring dental epithelial cells via an MSX1-mediated pathway (By similarity).
Cellular Location	Membrane; Single-pass type I membrane protein. Secreted Secreted, extracellular exosome Note=Shedding of the ectodomain produces a soluble form
Tissue Location	Detected in placenta (at protein level) (PubMed:32337544). Detected in fibroblasts (at protein level) (PubMed:36213313).

Images



Western blot analysis of Syndecan 1 expression in Ramos cell lysate.

Please note: All products are 'FOR RESEARCH USE ONLY. NOT FOR USE IN DIAGNOSTIC OR THERAPEUTIC PROCEDURES'.