

Catalase Antibody

Rabbit mAb

Catalog # AP91213

Product Information

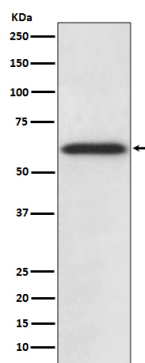
| | |
|--------------------------|---------------------------|
| Application | WB, IHC |
| Primary Accession | P04040 |
| Reactivity | Rat, Human, Mouse |
| Clonality | Monoclonal |
| Other Names | Cas1; CAT; Catalase; Cs1; |
| Isotype | Rabbit IgG |
| Host | Rabbit |
| Calculated MW | 60 KDa |

Additional Information

| | |
|-------------------------------------|--|
| Dilution | WB 1:500~1:1000 IHC 1:50~1:200 |
| Purification | Affinity-chromatography |
| Immunogen | A synthesized peptide derived from human Catalase |
| Description | Catalase catalyzes the conversion of hydrogen peroxide to water and oxygen. Research studies show that overexpression of this antioxidant enzyme increases the ability of pancreatic β -cells to scavenge reactive oxygen species (ROS), thereby protecting pancreatic β -cells from oxidative stress. |
| Storage Condition and Buffer | Rabbit IgG in phosphate buffered saline , pH 7.4, 150mM NaCl, 0.02% sodium azide and 50% glycerol. Store at +4°C short term. Store at -20°C long term. Avoid freeze / thaw cycle. |

Protein Information

Images



Western blot analysis of Catalase expression in HepG2 cell lysate.

Image not found : 202311/AP91213-IHC.jpg

Immunohistochemical analysis of paraffin-embedded rat liver, using Catalase Antibody.

Please note: All products are 'FOR RESEARCH USE ONLY. NOT FOR USE IN DIAGNOSTIC OR THERAPEUTIC PROCEDURES'.