

Integrin beta 4 Antibody

Rabbit mAb

Catalog # AP91207

Product Information

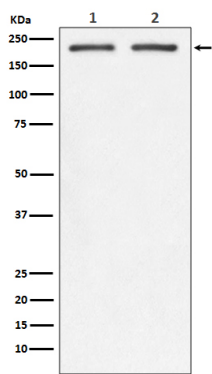
Application	WB, IHC
Primary Accession	P16144
Reactivity	Human, Mouse
Clonality	Monoclonal
Other Names	CD104; gp150; Integrin beta 4 subunit; ITG B4; ITGB 4; Itgb4;
Isotype	Rabbit IgG
Host	Rabbit
Calculated MW	202167

Additional Information

Dilution	WB 1:500~1:2000 IHC 1:50~1:200
Purification	Affinity-chromatography
Immunogen	A synthesized peptide derived from human Integrin beta 4
Description	Integrin alpha-6/beta-4 is a receptor for laminin. It plays a critical structural role in the hemidesmosome of epithelial cells.
Storage Condition and Buffer	Rabbit IgG in phosphate buffered saline , pH 7.4, 150mM NaCl, 0.02% sodium azide and 50% glycerol. Store at +4°C short term. Store at -20°C long term. Avoid freeze / thaw cycle.

Protein Information

Name	ITGB4
Function	Integrin alpha-6/beta-4 is a receptor for laminin. Plays a critical structural role in the hemidesmosome of epithelial cells. Is required for the regulation of keratinocyte polarity and motility. ITGA6:ITGB4 binds to NRG1 (via EGF domain) and this binding is essential for NRG1-ERBB signaling (PubMed: 20682778). ITGA6:ITGB4 binds to IGF1 and this binding is essential for IGF1 signaling (PubMed: 22351760). ITGA6:ITGB4 binds to IGF2 and this binding is essential for IGF2 signaling (PubMed: 28873464).
Cellular Location	Cell membrane; Single-pass type I membrane protein. Cell membrane; Lipid-anchor. Cell junction, hemidesmosome. Note=Colocalizes with DST at the leading edge of migrating keratinocytes
Tissue Location	Integrin alpha-6/beta-4 is predominantly expressed by epithelia. Isoform beta-4D is also expressed in colon and placenta Isoform beta-4E is also expressed in epidermis, lung, duodenum, heart, spleen and stomach



Western blot analysis of Integrin beta 4 expression in (1) SW480 cell lysate; (2) Mouse spleen lysate.

Image not found : 202311/AP91207-IHC.jpg

Immunohistochemical analysis of paraffin-embedded human breast cancer, using Integrin beta 4 Antibody.

Please note: All products are 'FOR RESEARCH USE ONLY. NOT FOR USE IN DIAGNOSTIC OR THERAPEUTIC PROCEDURES'.