

# DRD1 Antibody

Rabbit mAb

Catalog # AP91192

## Product Information

<b>Application</b>	WB
<b>Primary Accession</b>	<a href="#">P21728</a>
<b>Reactivity</b>	Rat, Human, Mouse
<b>Clonality</b>	Monoclonal
<b>Other Names</b>	D(1A) dopamine receptor; DADR; Dopamine D1 receptor; DR D1A1; DRD1; DRD1A;
<b>Isotype</b>	Rabbit IgG
<b>Host</b>	Rabbit
<b>Calculated MW</b>	49293

## Additional Information

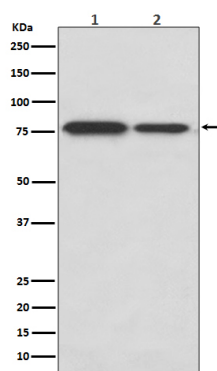
<b>Dilution</b>	WB 1:500~1:2000
<b>Purification</b>	Affinity-chromatography
<b>Immunogen</b>	A synthesized peptide derived from human DRD1
<b>Description</b>	Dopamine receptor whose activity is mediated by G proteins which activate adenylyl cyclase.
<b>Storage Condition and Buffer</b>	Rabbit IgG in phosphate buffered saline , pH 7.4, 150mM NaCl, 0.02% sodium azide and 50% glycerol. Store at +4°C short term. Store at -20°C long term. Avoid freeze / thaw cycle.

## Protein Information

<b>Name</b>	DRD1
<b>Function</b>	Dopamine receptor whose activity is mediated by G proteins which activate adenylyl cyclase. Forms heterotetramers with DRD3 to potentiate beta-arrestin recruitment and mediate locomotor activity.
<b>Cellular Location</b>	Cell membrane {ECO:0000250 UniProtKB:P18901}; Multi-pass membrane protein {ECO:0000250 UniProtKB:P18901}. Endoplasmic reticulum membrane {ECO:0000250 UniProtKB:P18901}; Multi-pass membrane protein {ECO:0000250 UniProtKB:P18901}. Cell projection, cilium membrane; Multi-pass membrane protein. Cell projection, dendrite {ECO:0000250 UniProtKB:Q61616}. Cell projection, dendritic spine {ECO:0000250 UniProtKB:Q61616}. Note=Transport from the endoplasmic reticulum to the cell surface is regulated by interaction with DNAJC14 {ECO:0000250 UniProtKB:P18901}
<b>Tissue Location</b>	Detected in caudate, nucleus accumbens and in the olfactory tubercle.

## Images

---



Western blot analysis of DRD1 expression in (1) SH-SY5Y cell lysate; (2) Mouse kidney lysate.

Please note: All products are 'FOR RESEARCH USE ONLY. NOT FOR USE IN DIAGNOSTIC OR THERAPEUTIC PROCEDURES'.