

HBG1/2 Antibody

Rabbit mAb

Catalog # AP91183

Product Information

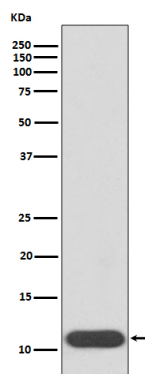
Application	WB
Primary Accession	P69891/P69892
Reactivity	Human
Clonality	Monoclonal
Other Names	Gamma 1 globin; Gamma 2 globin; Gamma A hemoglobin; Gamma globin; Hb F Agamma; Hb F Ggamma; HBG1; HBG2; HBGA; HBGR;
Isotype	Rabbit IgG
Host	Rabbit
Calculated MW	12 KDa

Additional Information

Dilution	WB 1:500~1:2000
Purification	Affinity-chromatography
Immunogen	A synthesized peptide derived from human HBG1/2
Description	The two types of gamma chains differ at residue 136 where glycine is found in the G-gamma product (HBG2) and alanine is found in the A-gamma product (HBG1). The former is predominant at birth. The order of the genes in the beta-globin cluster is: 5'-epsilon -- gamma-G -- gamma-A -- delta -- beta--3'.
Storage Condition and Buffer	Rabbit IgG in phosphate buffered saline , pH 7.4, 150mM NaCl, 0.02% sodium azide and 50% glycerol. Store at +4°C short term. Store at -20°C long term. Avoid freeze / thaw cycle.

Protein Information

Images



Western blot analysis of HBG1/2 expression in K562 cell lysate.

Please note: All products are 'FOR RESEARCH USE ONLY. NOT FOR USE IN DIAGNOSTIC OR THERAPEUTIC PROCEDURES'.