

SDHA Antibody

Rabbit mAb

Catalog # AP91182

Product Information

Application	WB, IHC, IF, FC, ICC, IP, IHF
Primary Accession	P31040
Reactivity	Rat, Human, Mouse
Clonality	Monoclonal
Other Names	PGL5; SDH1; SDH2; SDHA; SDHF;
Isotype	Rabbit IgG
Host	Rabbit
Calculated MW	72692

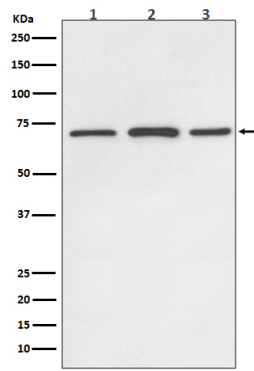
Additional Information

Dilution	WB 1:500~1:2000 IHC 1:50~1:200 ICC/IF 1:50~1:200 IP 1:20 FC 1:20
Purification	Affinity-chromatography
Immunogen	A synthesized peptide derived from human SDHA
Description	Flavoprotein (FP) subunit of succinate dehydrogenase (SDH) that is involved in complex II of the mitochondrial electron transport chain and is responsible for transferring electrons from succinate to ubiquinone.
Storage Condition and Buffer	Rabbit IgG in phosphate buffered saline , pH 7.4, 150mM NaCl, 0.02% sodium azide and 50% glycerol. Store at +4°C short term. Store at -20°C long term. Avoid freeze / thaw cycle.

Protein Information

Name	SDHA
Synonyms	SDH2, SDHF
Function	Flavoprotein (FP) subunit of succinate dehydrogenase (SDH) that is involved in complex II of the mitochondrial electron transport chain and is responsible for transferring electrons from succinate to ubiquinone (coenzyme Q) (PubMed: 10746566 , PubMed: 24781757). SDH also oxidizes malate to the non-canonical enol form of oxaloacetate, enol- oxaloacetate (By similarity). Enol-oxaloacetate, which is a potent inhibitor of the succinate dehydrogenase activity, is further isomerized into keto-oxaloacetate (By similarity). Can act as a tumor suppressor (PubMed: 20484225).
Cellular Location	Mitochondrion inner membrane; Peripheral membrane protein; Matrix side

Images



Western blot analysis of SDHA expression in (1) HeLa cell lysate; (2) Mouse brain lysate; (3) Rat brain lysate;

Please note: All products are 'FOR RESEARCH USE ONLY. NOT FOR USE IN DIAGNOSTIC OR THERAPEUTIC PROCEDURES'.