

Cathepsin L/V/K/H Antibody

Rabbit mAb

Catalog # AP91176

Product Information

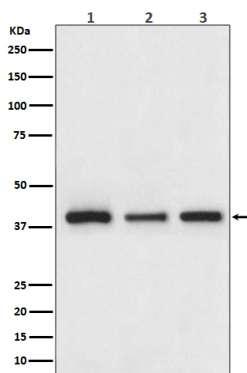
Application	WB, IHC, IF, FC, ICC, IHF
Primary Accession	P07711/O60911/P43235/P09668
Reactivity	Rat, Human, Mouse
Clonality	Monoclonal
Other Names	Cathepsin; CTSL; CTSV; CTSK; CTSH;
Isotype	Rabbit IgG
Host	Rabbit
Calculated MW	38 KDa

Additional Information

Dilution	WB 1:500~1:2000 IHC 1:50~1:200 ICC/IF 1:50~1:200 FC 1:50
Purification	Affinity-chromatography
Immunogen	A synthesized peptide derived from human Cathepsin L/V/K/H
Description	Closely involved in osteoclastic bone resorption and may participate partially in the disorder of bone remodeling. Displays potent endoprotease activity against fibrinogen at acid pH. May play an important role in extracellular matrix degradation.
Storage Condition and Buffer	Rabbit IgG in phosphate buffered saline , pH 7.4, 150mM NaCl, 0.02% sodium azide and 50% glycerol. Store at +4°C short term. Store at -20°C long term. Avoid freeze / thaw cycle.

Protein Information

Images



Western blot analysis of Cathepsin L/V/K/H expression in (1) HepG2 cell lysate; (2) NIH/3T3 cell lysate; (3) PC-12 cell lysate;

Citations

- [Bone remodelling patterns around orthodontic mini-implants migrating in bone: an experimental study in rat vertebrae](#)

Please note: All products are 'FOR RESEARCH USE ONLY. NOT FOR USE IN DIAGNOSTIC OR THERAPEUTIC PROCEDURES'.