

Endothelin B Receptor Antibody

Rabbit mAb

Catalog # AP91171

Product Information

Application	WB, IP
Primary Accession	P24530
Reactivity	Human
Clonality	Monoclonal
Other Names	ABCDS; Ednra; EDNRB; Endothelin B receptor precursor; ETB; ETBR; ETRB; Hirschsprung disease;
Isotype	Rabbit IgG
Host	Rabbit
Calculated MW	49644

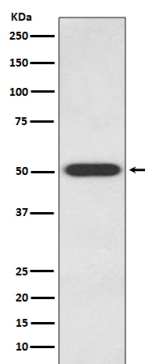
Additional Information

Dilution	WB 1:500~1:2000 IP 1:50
Purification	Affinity-chromatography
Immunogen	A synthesized peptide derived from human Endothelin B Receptor
Description	Non-specific receptor for endothelin 1, 2, and 3. Mediates its action by association with G proteins that activate a phosphatidylinositol-calcium second messenger system.
Storage Condition and Buffer	Rabbit IgG in phosphate buffered saline , pH 7.4, 150mM NaCl, 0.02% sodium azide and 50% glycerol. Store at +4°C short term. Store at -20°C long term. Avoid freeze / thaw cycle.

Protein Information

Name	EDNRB (HGNC:3180)
Synonyms	ETRB
Function	Non-specific receptor for endothelin 1, 2, and 3. Mediates its action by association with G proteins that activate a phosphatidylinositol-calcium second messenger system.
Cellular Location	Cell membrane; Multi-pass membrane protein. Note=internalized after activation by endothelins.
Tissue Location	Expressed in placental stem villi vessels, but not in cultured placental villi smooth muscle cells

Images



Western blot analysis of Endothelin B Receptor expression in 293T cell lysate.

Please note: All products are 'FOR RESEARCH USE ONLY. NOT FOR USE IN DIAGNOSTIC OR THERAPEUTIC PROCEDURES'.