

Lin28 Antibody

Rabbit mAb

Catalog # AP91157

Product Information

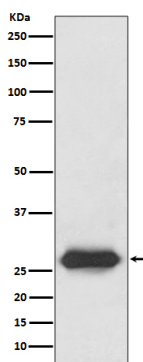
Application	WB, FC, IP
Primary Accession	Q9H9Z2
Reactivity	Human
Clonality	Monoclonal
Other Names	Protein lin-28 homolog A; LIN28A; CSDD1; LIN28; ZCCHC1;
Isotype	Rabbit IgG
Host	Rabbit
Calculated MW	26 KDa

Additional Information

Dilution	WB 1:500~1:2000 IP 1:50 FC 1:50
Purification	Affinity-chromatography
Immunogen	A synthesized peptide derived from human Lin28
Description	Involved in the timing of developmental events and choice of stage specific cell fates. Acts as a suppressor of microRNA (miRNA) biogenesis by specifically binding the precursor let-7 (pre-let-7), a miRNA precursor. Acts by binding pre-let-7 and recruiting ZCCHC11/TUT4 uridylyltransferase, leading to the terminal uridylation of pre-let-7.
Storage Condition and Buffer	Rabbit IgG in phosphate buffered saline , pH 7.4, 150mM NaCl, 0.02% sodium azide and 50% glycerol. Store at +4°C short term. Store at -20°C long term. Avoid freeze / thaw cycle.

Protein Information

Images



Western blot analysis of Lin28 expression in NCCIT cell lysate.

Please note: All products are 'FOR RESEARCH USE ONLY. NOT FOR USE IN DIAGNOSTIC OR THERAPEUTIC PROCEDURES'.