

CEA(CD66e) Antibody

Rabbit mAb

Catalog # AP91140

Product Information

Application	WB, IHC, IF, ICC, IHF
Primary Accession	P06731
Reactivity	Human
Clonality	Monoclonal
Other Names	adhesion molecule 5; CD66e; Ceacam5; Meconium antigen 100;
Isotype	Rabbit IgG
Host	Rabbit
Calculated MW	76796

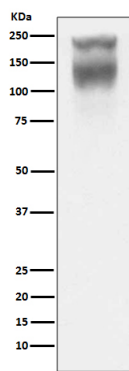
Additional Information

Dilution	WB 1:500~1:2000 IHC 1:50~1:200 ICC/IF 1:50~1:200
Purification	Affinity-chromatography
Immunogen	A synthesized peptide derived from human CEA(CD66e)
Description	Carcinoembryonic antigen (CEA), also known as CD66e or CEACAM5, is a 180-200 kDa cell surface glycoprotein whose expression is elevated in intestinal carcinomas and other tumors. CEA mediates cell adhesion, though little more is known about its biological activity.
Storage Condition and Buffer	Rabbit IgG in phosphate buffered saline , pH 7.4, 150mM NaCl, 0.02% sodium azide and 50% glycerol. Store at +4°C short term. Store at -20°C long term. Avoid freeze / thaw cycle.

Protein Information

Name	CEACAM5 (HGNC:1817)
Function	Cell surface glycoprotein that plays a role in cell adhesion, intracellular signaling and tumor progression (PubMed: 10864933 , PubMed: 10910050 , PubMed: 2803308). Mediates homophilic and heterophilic cell adhesion with other carcinoembryonic antigen-related cell adhesion molecules, such as CEACAM6 (PubMed: 2803308). Plays a role as an oncogene by promoting tumor progression; induces resistance to anoikis of colorectal carcinoma cells (PubMed: 10910050).
Cellular Location	Cell membrane; Lipid-anchor, GPI-anchor; Extracellular side. Apical cell membrane. Cell surface Note=Localized to the apical glycocalyx surface
Tissue Location	Expressed in columnar epithelial and goblet cells of the colon (at protein level) (PubMed:10436421). Found in adenocarcinomas of endodermally derived digestive system epithelium and fetal colon.

Images



Western blot analysis of CEA(CD66e) expression in Human colon cancer lysate.

Image not found : 202311/AP91140-IHC.jpg

Immunohistochemical analysis of paraffin-embedded human colon carcinoma, using CEA(CD66e) Antibody.

Image not found : 202311/AP91140-IF.jpg

Immunofluorescent analysis of MCF-7 cells, using CEA(CD66e) Antibody.

Please note: All products are 'FOR RESEARCH USE ONLY. NOT FOR USE IN DIAGNOSTIC OR THERAPEUTIC PROCEDURES'.