

MHC class I Antibody

Rabbit mAb

Catalog # AP91133

Product Information

Application	WB, IHC, IF, FC, ICC, IHF
Primary Accession	P30443/P01889/P01891/P01892/P13746/P16188/P30450
Reactivity	Human
Clonality	Monoclonal
Other Names	HLA class I histocompatibility; HLA A; HLA B;
Isotype	Rabbit IgG
Host	Rabbit
Calculated MW	41 KDa

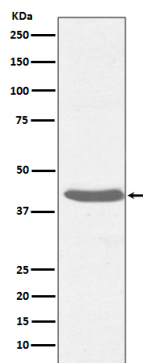
Additional Information

Dilution	WB 1:500~1:2000 IHC 1:50~1:200 ICC/IF 1:50~1:200 FC 1:50
Purification	Affinity-chromatography
Immunogen	A synthesized peptide derived from human MHC class I
Description	Major histocompatibility complex (MHC) molecules form an integral part of the immune response system. They are cell-surface receptors that bind peptides and present them to T lymphocytes. HLA-A, -B and -C encode membrane anchored heavy chains which heterodimerize with a light chain (b-2-Microglobulin) to form MHC-I. Polymorphisms yield hundreds of HLA-A, -B and -C alleles.
Storage Condition and Buffer	Rabbit IgG in phosphate buffered saline , pH 7.4, 150mM NaCl, 0.02% sodium azide and 50% glycerol. Store at +4°C short term. Store at -20°C long term. Avoid freeze / thaw cycle.

Protein Information

Images

Western blot analysis of MHC class I expression in Raji cell lysate.



Please note: All products are 'FOR RESEARCH USE ONLY. NOT FOR USE IN DIAGNOSTIC OR THERAPEUTIC PROCEDURES'.