

Chromogranin A Antibody

Rabbit mAb

Catalog # AP91132

Product Information

Application	WB, IHC, IF, FC, ICC, IHF
Primary Accession	P10645
Reactivity	Human
Clonality	Monoclonal
Other Names	beta Granin; Chromogranin A; ChrA; SP-I; Vasostatin I; Vasostatin-2; Vasostatin II; Pancreastatin; CHGA;
Isotype	Rabbit IgG
Host	Rabbit
Calculated MW	50688

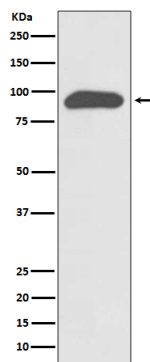
Additional Information

Dilution	WB 1:500~1:2000 IHC 1:50~1:200 ICC/IF 1:50~1:200 FC 1:20
Purification	Affinity-chromatography
Immunogen	A synthesized peptide derived from human Chromogranin A
Description	Pancreastatin strongly inhibits glucose induced insulin release from the pancreas.
Storage Condition and Buffer	Rabbit IgG in phosphate buffered saline , pH 7.4, 150mM NaCl, 0.02% sodium azide and 50% glycerol. Store at +4°C short term. Store at -20°C long term. Avoid freeze / thaw cycle.

Protein Information

Name	CHGA
Function	[Pancreastatin]: Strongly inhibits glucose induced insulin release from the pancreas. [Serpinin]: Regulates granule biogenesis in endocrine cells by up-regulating the transcription of protease nexin 1 (SERPINE2) via a cAMP-PKA-SP1 pathway. This leads to inhibition of granule protein degradation in the Golgi complex which in turn promotes granule formation.
Cellular Location	[Serpinin]: Secreted {ECO:0000250 UniProtKB:P26339}. Cytoplasmic vesicle, secretory vesicle {ECO:0000250 UniProtKB:P26339}. Note=Pyroglutaminated serpinin localizes to secretory vesicle. {ECO:0000250 UniProtKB:P26339}
Tissue Location	Detected in cerebrospinal fluid (at protein level) (PubMed:25326458). Detected in urine (at protein level) (PubMed:37453717).

Images



Western blot analysis of Chromogranin A expression in SH-SY5Y cell lysate.

Image not found : 202311/AP91132-wb6.jpg

The SOX4/miR-17-92/RB1 Axis Promotes Prostate Cancer Progression. -Neoplasia

Please note: All products are 'FOR RESEARCH USE ONLY. NOT FOR USE IN DIAGNOSTIC OR THERAPEUTIC PROCEDURES'.