

58K Golgi protein Antibody

Rabbit mAb

Catalog # AP91086

Product Information

Application	WB, IHC, FC
Primary Accession	O95954
Reactivity	Human
Clonality	Monoclonal
Other Names	Formimidoyltetrahydrofolate cyclodeaminase; FTCD; Glutamate formiminotransferase; LCHC 1;
Isotype	Rabbit IgG
Host	Rabbit
Calculated MW	58927

Additional Information

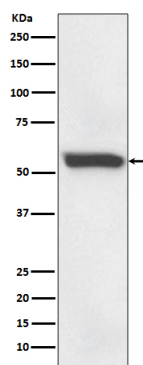
Dilution	WB 1:500~1:2000 IHC 1:50~1:200 FC 1:100
Purification	Affinity-chromatography
Immunogen	A synthesized peptide derived from human 58K Golgi protein
Description	Folate-dependent enzyme, that displays both transferase and deaminase activity. Serves to channel one-carbon units from formiminoglutamate to the folate pool. Binds and promotes bundling of vimentin filaments originating from the Golgi.
Storage Condition and Buffer	Rabbit IgG in phosphate buffered saline , pH 7.4, 150mM NaCl, 0.02% sodium azide and 50% glycerol. Store at +4°C short term. Store at -20°C long term. Avoid freeze / thaw cycle.

Protein Information

Name	FTCD
Function	Folate-dependent enzyme, that displays both transferase and deaminase activity. Serves to channel one-carbon units from formiminoglutamate to the folate pool.
Cellular Location	Cytoplasm, cytosol {ECO:0000250 UniProtKB:Q9YH58}. Golgi apparatus {ECO:0000250 UniProtKB:Q9YH58}. Cytoplasm, cytoskeleton, microtubule organizing center, centrosome, centriole Note=More abundantly located around the mother centriole

Images

Western blot analysis of 58K Golgi protein expression in



human fetal liver lysate.

Please note: All products are 'FOR RESEARCH USE ONLY. NOT FOR USE IN DIAGNOSTIC OR THERAPEUTIC PROCEDURES'.