

PDI Antibody

Rabbit mAb

Catalog # AP91067

Product Information

Application	WB, FC
Primary Accession	Q13087
Reactivity	Rat, Human, Mouse
Clonality	Monoclonal
Other Names	P4HB; PDIA2; PDIR;
Isotype	Rabbit IgG
Host	Rabbit
Calculated MW	58206

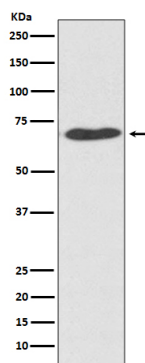
Additional Information

Dilution	WB 1:500~1:2000 FC 1:50
Purification	Affinity-chromatography
Immunogen	A synthesized peptide derived from human PDI
Description	Acts as an intracellular estrogen-binding protein. May be involved in modulating cellular levels and biological functions of estrogens in the pancreas. May act as a chaperone that inhibits aggregation of misfolded proteins.
Storage Condition and Buffer	Rabbit IgG in phosphate buffered saline , pH 7.4, 150mM NaCl, 0.02% sodium azide and 50% glycerol. Store at +4°C short term. Store at -20°C long term. Avoid freeze / thaw cycle.

Protein Information

Name	PDIA2
Synonyms	PDIP
Function	Acts as an intracellular estrogen-binding protein. May be involved in modulating cellular levels and biological functions of estrogens in the pancreas. May act as a chaperone that inhibits aggregation of misfolded proteins.
Cellular Location	Endoplasmic reticulum lumen {ECO:0000255 PROSITE- ProRule:PRU10138}
Tissue Location	Highly expressed in pancreas (at protein level).

Images



Western blot analysis of PDI expression in HeLa cell lysate.

Please note: All products are 'FOR RESEARCH USE ONLY. NOT FOR USE IN DIAGNOSTIC OR THERAPEUTIC PROCEDURES'.