

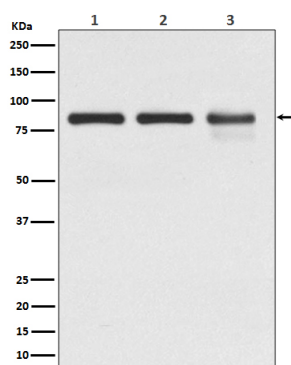
Cellular Location

Cell junction, adherens junction. Cell junction, desmosome. Cytoplasm, cytoskeleton. Cell membrane; Peripheral membrane protein. Cytoplasm {ECO:0000250|UniProtKB:Q9PVF7}. Cell junction {ECO:0000250|UniProtKB:Q9PVF7}. Nucleus {ECO:0000250|UniProtKB:Q9PVF7} Cell projection, axon {ECO:0000250|UniProtKB:Q02257}. Note=Cytoplasmic in a soluble and membrane-associated form. Colocalizes with DSG4 at desmosomes (PubMed:21495994).

Tissue Location

Expressed in cardiomyocytes in the heart (at protein level).

Images



Western blot analysis of Catenin gamma expression in (1) A431 cell lysate; (2) NIH 3T3 cell lysate; (3) C6 cell lysate.

Please note: All products are 'FOR RESEARCH USE ONLY. NOT FOR USE IN DIAGNOSTIC OR THERAPEUTIC PROCEDURES'.