

# HE4 Antibody

Rabbit mAb

Catalog # AP91057

## Product Information

|                          |   |
|--------------------------|---|
| <b>Application</b>       | WB, IF, FC, ICC, IP   |
| <b>Primary Accession</b> | <a href="#">Q14508</a>  |
| <b>Reactivity</b>        | Human, Mouse  |
| <b>Clonality</b>         | Monoclonal  |
| <b>Other Names</b>       | WFDC2; Epididymis-specific he4; Epididymal protein 4; DJ461P17.6; EDDM4; HE4; WAP5; |
| <b>Isotype</b>           | Rabbit IgG  |
| <b>Host</b>              | Rabbit  |
| <b>Calculated MW</b>     | 12993   |

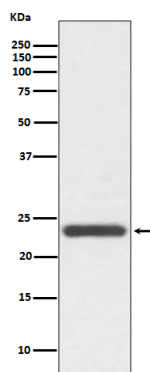
## Additional Information

|                                     |   |
|-------------------------------------|---|
| <b>Dilution</b>                     | WB 1:500~1:2000 ICC/IF 1:50~1:200 IP 1:50 FC 1:50   |
| <b>Purification</b>                 | Affinity-chromatography   |
| <b>Immunogen</b>                    | A synthesized peptide derived from human HE4  |
| <b>Description</b>                  | Expressed in a number of normal tissues, including male reproductive system, regions of the respiratory tract and nasopharynx. Highly expressed in a number of tumors cells lines, such ovarian, colon, breast, lung and renal cells lines. Initially described as being exclusively transcribed in the epididymis. |
| <b>Storage Condition and Buffer</b> | Rabbit IgG in phosphate buffered saline , pH 7.4, 150mM NaCl, 0.02% sodium azide and 50% glycerol. Store at +4°C short term. Store at -20°C long term. Avoid freeze / thaw cycle.   |

## Protein Information

|                          |  |
|--------------------------|--|
| <b>Name</b>              | WFDC2  |
| <b>Synonyms</b>          | HE4, WAP5  |
| <b>Function</b>          | Broad range protease inhibitor.  |
| <b>Cellular Location</b> | Secreted   |
| <b>Tissue Location</b>   | Expressed in a number of normal tissues, including male reproductive system, regions of the respiratory tract and nasopharynx. Highly expressed in a number of tumors cells lines, such ovarian, colon, breast, lung and renal cells lines. Initially described as being exclusively transcribed in the epididymis |

## Images



Western blot analysis of HE4 expression in SW480 cell lysate.

Image not found : 202311/AP91057-IF.jpg

Immunofluorescent analysis of SK-OV-3 cells, using HE4 Antibody.

Please note: All products are 'FOR RESEARCH USE ONLY. NOT FOR USE IN DIAGNOSTIC OR THERAPEUTIC PROCEDURES'.