

Collagen X Antibody

Rabbit mAb

Catalog # AP91056

Product Information

Application	WB
Primary Accession	Q03692
Reactivity	Rat, Human, Mouse
Clonality	Monoclonal
Other Names	CollagenX; COL10A1; COAA1; Collagen type X alpha 1;
Isotype	Rabbit IgG
Host	Rabbit
Calculated MW	66158

Additional Information

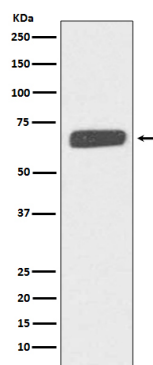
Dilution	WB 1:500~1:2000
Purification	Affinity-chromatography
Immunogen	A synthesized peptide derived from human Collagen X
Description	Type X collagen is a product of hypertrophic chondrocytes and has been localized to presumptive mineralization zones of hyaline cartilage.
Storage Condition and Buffer	Rabbit IgG in phosphate buffered saline , pH 7.4, 150mM NaCl, 0.02% sodium azide and 50% glycerol. Store at +4°C short term. Store at -20°C long term. Avoid freeze / thaw cycle.

Protein Information

Name	COL10A1
Function	Type X collagen is a product of hypertrophic chondrocytes and has been localized to presumptive mineralization zones of hyaline cartilage.
Cellular Location	Secreted, extracellular space, extracellular matrix

Images

Western blot analysis of Collagen X expression in human fetal skin lysate.



Please note: All products are 'FOR RESEARCH USE ONLY. NOT FOR USE IN DIAGNOSTIC OR THERAPEUTIC PROCEDURES'.