

BMP11 Antibody

Rabbit mAb

Catalog # AP91055

Product Information

Application	WB, IHC, IF, ICC, IHF
Primary Accession	O95390
Reactivity	Rat, Human
Clonality	Monoclonal
Other Names	GDF11; BMP11; Bone morphogenetic protein 11; GDF-11; BMP-11;
Isotype	Rabbit IgG
Host	Rabbit
Calculated MW	45091

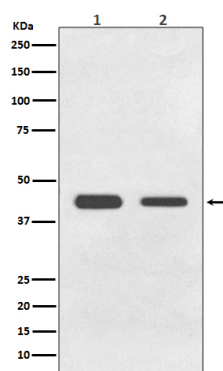
Additional Information

Dilution	WB 1:500~1:2000 IHC 1:50~1:200 ICC/IF 1:50~1:200
Purification	Affinity-chromatography
Immunogen	A synthesized peptide derived from human BMP11
Description	Secreted signal that acts globally to specify positional identity along the anterior/posterior axis during development. Play critical roles in patterning both mesodermal and neural tissues and in establishing the skeletal pattern.
Storage Condition and Buffer	Rabbit IgG in phosphate buffered saline , pH 7.4, 150mM NaCl, 0.02% sodium azide and 50% glycerol. Store at +4°C short term. Store at -20°C long term. Avoid freeze / thaw cycle.

Protein Information

Name	GDF11
Synonyms	BMP11 {ECO:0000303 PubMed:10075854}
Function	Secreted signal that acts globally to regulate anterior/posterior axial patterning during development. May play critical roles in patterning both mesodermal and neural tissues (By similarity). It is required for proper vertebral patterning and orofacial development (PubMed: 31215115). Signals through activin receptors type-2, ACVR2A and ACVR2B, and activin receptors type-1, ACVR1B, ACVR1C and TGFBR1 leading to the phosphorylation of SMAD2 and SMAD3 (PubMed: 28257634).
Cellular Location	Secreted.
Tissue Location	In the embryo, strong expression is seen in the palatal epithelia, including the medial edge epithelial and midline epithelial seam of the palatal shelves. Less pronounced expression is also seen throughout the palatal shelf and tongue mesenchyme

Images



Western blot analysis of BMP11 expression in (1) HeLa cell lysate; (2) C6 cell lysate.

Please note: All products are 'FOR RESEARCH USE ONLY. NOT FOR USE IN DIAGNOSTIC OR THERAPEUTIC PROCEDURES'.