

67kDa Laminin Receptor Antibody

Rabbit mAb

Catalog # AP91048

Product Information

Application	WB, IHC, IF, FC, ICC, IP, IHF
Primary Accession	P08865
Reactivity	Rat, Human, Mouse
Clonality	Monoclonal
Other Names	RPSA; 37LRP; 67LR; LAMR1; LAMBR; LamR; LRP/LR; RSSA;
Isotype	Rabbit IgG
Host	Rabbit
Calculated MW	32854

Additional Information

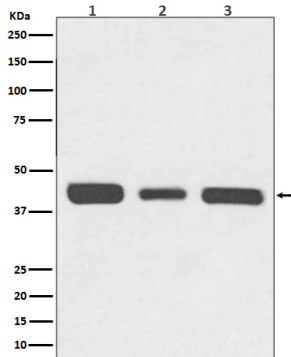
Dilution	WB 1:500~1:2000 IHC 1:50~1:200 ICC/IF 1:50~1:200 IP 1:50 FC 1:50
Purification	Affinity-chromatography
Immunogen	A synthesized peptide derived from human 67kDa Laminin Receptor
Description	Required for the assembly and/or stability of the 40S ribosomal subunit. Required for the processing of the 20S rRNA-precursor to mature 18S rRNA in a late step of the maturation of 40S ribosomal subunits. Also functions as a cell surface receptor for laminin. Plays a role in cell adhesion to the basement membrane and in the consequent activation of signaling transduction pathways.
Storage Condition and Buffer	Rabbit IgG in phosphate buffered saline , pH 7.4, 150mM NaCl, 0.02% sodium azide and 50% glycerol. Store at +4°C short term. Store at -20°C long term. Avoid freeze / thaw cycle.

Protein Information

Name	RPSA {ECO:0000255 HAMAP-Rule:MF_03016}
Synonyms	LAMBR, LAMR1
Function	Required for the assembly and/or stability of the 40S ribosomal subunit. Required for the processing of the 20S rRNA- precursor to mature 18S rRNA in a late step of the maturation of 40S ribosomal subunits. Also functions as a cell surface receptor for laminin. Plays a role in cell adhesion to the basement membrane and in the consequent activation of signaling transduction pathways. May play a role in cell fate determination and tissue morphogenesis. Acts as a PPP1R16B-dependent substrate of PPP1CA.
Cellular Location	Cell membrane. Cytoplasm. Nucleus {ECO:0000255 HAMAP-Rule:MF_03016}. Note=67LR is found at the surface of the plasma membrane, with its C-terminal laminin-binding domain accessible to extracellular ligands. 37LRP

is found at the cell surface, in the cytoplasm and in the nucleus (By similarity)
Colocalizes with PPP1R16B in the cell membrane. {ECO:0000255|HAMAP-
Rule:MF_03016}

Images



Western blot analysis of 67kDa Laminin Receptor
expression in (1) HeLa cell lysate; (2) NIH/3T3 cell lysate;
(3) PC-12 cell lysate.

Please note: All products are 'FOR RESEARCH USE ONLY. NOT FOR USE IN DIAGNOSTIC OR THERAPEUTIC PROCEDURES'.