

DUSP1 Antibody

Rabbit mAb

Catalog # AP91019

Product Information

Application	WB, IHC, IF, FC, ICC, IP, IHF
Primary Accession	P28562
Reactivity	Rat, Human, Mouse
Clonality	Monoclonal
Other Names	HVH1; MKP1; CL100; MKP-1; PTPN10; DUSP1;
Isotype	Rabbit IgG
Host	Rabbit
Calculated MW	39298

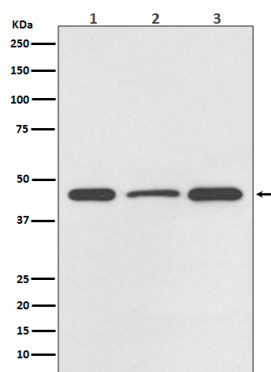
Additional Information

Dilution	WB 1:500~1:2000 IHC 1:50~1:200 ICC/IF 1:50~1:200 IP 1:50 FC 1:50
Purification	Affinity-chromatography
Immunogen	A synthesized peptide derived from human DUSP1
Description	The expression of DUSP1 gene is induced in human skin fibroblasts by oxidative/heat stress and growth factors. It specifies a protein with structural features similar to members of the non-receptor-type protein-tyrosine phosphatase family, and which has significant amino-acid sequence similarity to a Tyr/Ser-protein phosphatase encoded by the late gene H1 of vaccinia virus.
Storage Condition and Buffer	Rabbit IgG in phosphate buffered saline , pH 7.4, 150mM NaCl, 0.02% sodium azide and 50% glycerol. Store at +4°C short term. Store at -20°C long term. Avoid freeze / thaw cycle.

Protein Information

Name	DUSP1 (HGNC:3064)
Function	Dual specificity phosphatase that dephosphorylates MAP kinase MAPK1/ERK2 on both 'Thr-183' and 'Tyr-185', regulating its activity during the meiotic cell cycle.
Cellular Location	Nucleus {ECO:0000250 UniProtKB:Q91790}.
Tissue Location	Expressed at high levels in the lung, liver placenta and pancreas. Moderate levels seen in the heart and skeletal muscle. Lower levels found in the brain and kidney

Images



Western blot analysis of DUSP1 expression in (1) HeLa cell lysate; (2) NIH/3T3 cell lysate; (3) PC-12 cell lysate.

Please note: All products are 'FOR RESEARCH USE ONLY. NOT FOR USE IN DIAGNOSTIC OR THERAPEUTIC PROCEDURES'.