

Phospho-c-Jun (S63) Antibody

Rabbit mAb

Catalog # AP91008

Product Information

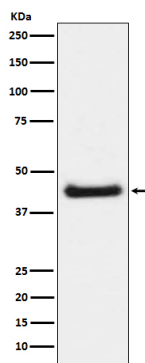
Application	WB, IHC, IF, ICC, IHF
Primary Accession	P05412
Reactivity	Rat, Human, Mouse
Clonality	Monoclonal
Other Names	AH119; AP1; Activator protein 1; Jun A; c-Jun;
Isotype	Rabbit IgG
Host	Rabbit
Calculated MW	48 KDa

Additional Information

Dilution	WB 1:500~1:2000 IHC 1:50~1:200 ICC/IF 1:50~1:200
Purification	Affinity-chromatography
Immunogen	A synthesized peptide derived from human Phospho-c-Jun (S63)
Description	Transcription factor that recognizes and binds to the enhancer heptamer motif 5'-TGA[CG]TCA-3'. Promotes activity of NR5A1 when phosphorylated by HIPK3 leading to increased steroidogenic gene expression upon cAMP signaling pathway stimulation.
Storage Condition and Buffer	Rabbit IgG in phosphate buffered saline , pH 7.4, 150mM NaCl, 0.02% sodium azide and 50% glycerol. Store at +4°C short term. Store at -20°C long term. Avoid freeze / thaw cycle.

Protein Information

Images



Western blot analysis of c-Jun phosphorylation expression in NIH/3T3 cell lysate treated with Anisomycin.

Image not found : 202311/AP91008-IHC.jpg

Immunohistochemical analysis of paraffin-embedded human breast carcinoma, using Phospho-c-Jun (S63) Antibody.

Image not found : 202311/AP91008-IF.jpg

Immunofluorescent analysis of HeLa cells treated with anisomycin, using Phospho-c-Jun (S63) Antibody.

Please note: All products are 'FOR RESEARCH USE ONLY. NOT FOR USE IN DIAGNOSTIC OR THERAPEUTIC PROCEDURES'.