

AKT1/2 Antibody

Rabbit mAb

Catalog # AP90971

Product Information

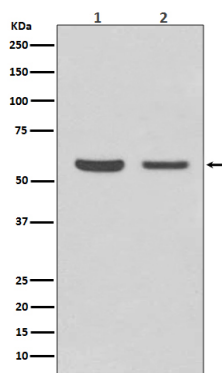
Application	WB, IHC, IF, FC, ICC, IHF
Primary Accession	P31749/P31751
Reactivity	Rat, Human, Mouse
Clonality	Monoclonal
Other Names	AKT1; AKT1 kinase; AKT2; AKT2 kinase; C AKT; CWS6; Oncogene AKT1; PKB alpha; PKB beta; PRKBA; PRKBB;
Isotype	Rabbit IgG
Host	Rabbit
Calculated MW	56 KDa

Additional Information

Dilution	WB 1:500~1:2000 IHC 1:50~1:200 ICC/IF 1:50~1:200 FC 1:50
Purification	Affinity-chromatography
Immunogen	A synthesized peptide derived from human AKT1/2
Description	The serine/threonine kinase AKT (protein kinase B or PKB) has a central role in the regulation of several signaling pathways controlling cell proliferation, apoptosis, angiogenesis, and diabetes.
Storage Condition and Buffer	Rabbit IgG in phosphate buffered saline , pH 7.4, 150mM NaCl, 0.02% sodium azide and 50% glycerol. Store at +4°C short term. Store at -20°C long term. Avoid freeze / thaw cycle.

Protein Information

Images



Western blot analysis of AKT1/2 expression in (1) HeLa cell lysate; (2) NIH/3T3 cell lysate.

Please note: All products are 'FOR RESEARCH USE ONLY. NOT FOR USE IN DIAGNOSTIC OR THERAPEUTIC PROCEDURES'.