

# EFEMP1 Antibody (N-term)

Affinity Purified Rabbit Polyclonal Antibody (Pab)

Catalog # AP9095a

## Product Information

---

<b>Application</b>	WB, IHC-P, FC, E
<b>Primary Accession</b>	<a href="#">Q12805</a>
<b>Other Accession</b>	<a href="#">Q35568</a> , <a href="#">Q8BPB5</a> , <a href="#">Q7YQD7</a>
<b>Reactivity</b>	Human, Mouse
<b>Predicted</b>	Monkey, Rat
<b>Host</b>	Rabbit
<b>Clonality</b>	Polyclonal
<b>Isotype</b>	Rabbit IgG
<b>Clone Names</b>	RB22140
<b>Calculated MW</b>	54641
<b>Antigen Region</b>	119-148

## Additional Information

---

<b>Gene ID</b>	2202
<b>Other Names</b>	EGF-containing fibulin-like extracellular matrix protein 1, Extracellular protein S1-5, Fibrillin-like protein, Fibulin-3, FIBL-3, EFEMP1, FBLN3, FBNL
<b>Target/Specificity</b>	This EFEMP1 antibody is generated from rabbits immunized with a KLH conjugated synthetic peptide between 119-148 amino acids from the N-terminal region of human EFEMP1.
<b>Dilution</b>	WB~~1:1000 IHC-P~~1:100~500 FC~~1:10~50 E~~Use at an assay dependent concentration.
<b>Format</b>	Purified polyclonal antibody supplied in PBS with 0.09% (W/V) sodium azide. This antibody is purified through a protein A column, followed by peptide affinity purification.
<b>Storage</b>	Maintain refrigerated at 2-8°C for up to 2 weeks. For long term storage store at -20°C in small aliquots to prevent freeze-thaw cycles.
<b>Precautions</b>	EFEMP1 Antibody (N-term) is for research use only and not for use in diagnostic or therapeutic procedures.

## Protein Information

---

<b>Name</b>	EFEMP1
<b>Synonyms</b>	FBLN3, FBNL

<b>Function</b>	Binds EGFR, the EGF receptor, inducing EGFR autophosphorylation and the activation of downstream signaling pathways. May play a role in cell adhesion and migration. May function as a negative regulator of chondrocyte differentiation. In the olfactory epithelium, it may regulate glial cell migration, differentiation and the ability of glial cells to support neuronal neurite outgrowth.
<b>Cellular Location</b>	Secreted, extracellular space, extracellular matrix. Note=Localizes to the lamina propria underneath the olfactory epithelium {ECO:0000250 UniProtKB:O35568}
<b>Tissue Location</b>	In the eye, associated with photoreceptor outer and inner segment regions, the nerve fiber layer, outer nuclear layer and inner and outer plexiform layers of the retina

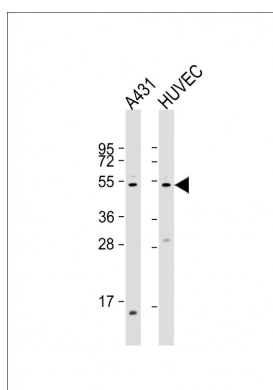
## Background

EFEMP1 encodes a member of the fibulin family of extracellular matrix glycoproteins. Like all members of this family, the encoded protein contains tandemly repeated epidermal growth factor-like repeats followed by a C-terminus fibulin-type domain. This gene is upregulated in malignant gliomas and may play a role in the aggressive nature of these tumors.

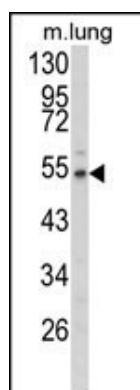
## References

Okada,Y., et.al., Hum. Mol. Genet. (2010) In press  
Wakabayashi,T., et.al., Biochem. Biophys. Res. Commun. 391 (1), 1116-1121 (2010)

## Images

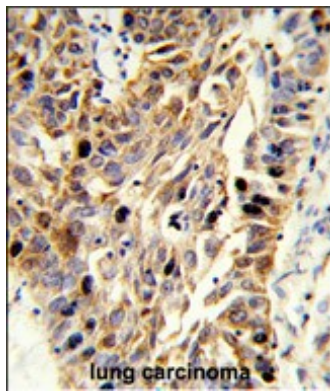


All lanes : Anti-EFEMP1 Antibody (N-term) at 1:1000 dilution  
Lane 1: A431 whole cell lysate  
Lane 2: HUVEC whole cell lysate  
Lysates/proteins at 20 µg per lane.  
Secondary Goat Anti-Rabbit IgG, (H+L), Peroxidase conjugated at 1/10000 dilution. Predicted band size : 55 kDa  
Blocking/Dilution buffer: 5% NFDM/TBST.

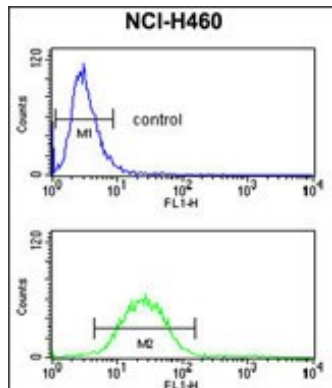


Western blot analysis of EFEMP1 Antibody (N-term) (Cat. #AP9095a) in mouse lung tissue lysates (35ug/lane). EFEMP1 (arrow) was detected using the purified Pab.

Formalin-fixed and paraffin-embedded human lung carcinoma reacted with EFEMP1 Antibody (N-term), which



was peroxidase-conjugated to the secondary antibody, followed by DAB staining. This data demonstrates the use of this antibody for immunohistochemistry; clinical relevance has not been evaluated.



EFEMP1 Antibody (N-term) (Cat. #AP9095a) flow cytometry analysis of NCI-H460 cells (bottom histogram) compared to a negative control cell (top histogram). FITC-conjugated goat-anti-rabbit secondary antibodies were used for the analysis.

## Citations

- [Fibulin-3 affects vascular endothelial function and is regulated by angiotensin II](#)
- [EFEMP1 as a Potential Biomarker for Diagnosis and Prognosis of Osteosarcoma](#)
- [EFEMP1 promotes the migration and invasion of osteosarcoma via MMP-2 with induction by AEG-1 via NF-κB signaling pathway.](#)
- [Hypertensive vascular remodeling was inhibited by Xuezhikang through the regulation of Fibulin-3 and MMPs in spontaneously hypertensive rats.](#)
- [Anti-EGFR function of EFEMP1 in glioma cells and patient prognosis.](#)

Please note: All products are 'FOR RESEARCH USE ONLY. NOT FOR USE IN DIAGNOSTIC OR THERAPEUTIC PROCEDURES'.