

Phospho-Rac1/Cdc42 (Ser71) Antibody

Rabbit mAb

Catalog # AP90957

Product Information

Application	WB
Primary Accession	P60953/P63000
Reactivity	Human
Clonality	Monoclonal
Other Names	CDC42; CDC42Hs; G25K; TKS; MIG5; Ras like protein TC25;
Isotype	Rabbit IgG
Host	Rabbit
Calculated MW	24 KDa

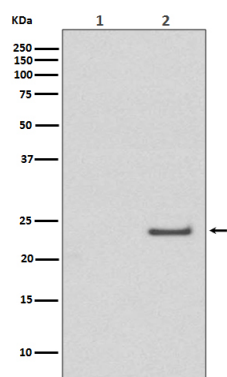
Additional Information

Dilution	WB 1:500~1:1000
Purification	Affinity-chromatography
Immunogen	A synthesized peptide derived from human Phospho-Rac1/Cdc42 (Ser71)
Description	Rac and Cdc42 are members of the Rho-GTPase family. In mammals, Rac exists as three isoforms, Rac1, Rac2 and Rac3, which are highly similar in sequence. Rac1 and Cdc42, the most widely studied of this group, are ubiquitously expressed. Rac2 is expressed in cells of hematopoietic origin, and Rac3, while highly expressed in brain, is also found in many other tissues. Rac and Cdc42 play key signaling roles in cytoskeletal reorganization, membrane trafficking, transcriptional regulation, cell growth and development.
Storage Condition and Buffer	Rabbit IgG in phosphate buffered saline , pH 7.4, 150mM NaCl, 0.02% sodium azide and 50% glycerol. Store at +4°C short term. Store at -20°C long term. Avoid freeze / thaw cycle.

Protein Information

Images

Western blot analysis of Phospho-Rac1/Cdc42 (Ser71) expression in (1) A431 cell lysate treated with LP; (2) A431 cell lysate.



Please note: All products are 'FOR RESEARCH USE ONLY. NOT FOR USE IN DIAGNOSTIC OR THERAPEUTIC PROCEDURES'.