

A-RAF Antibody

Rabbit mAb

Catalog # AP90956

Product Information

Application	WB, IHC, IF, FC, ICC, IHF
Primary Accession	P10398
Reactivity	Human
Clonality	Monoclonal
Other Names	ARAF; A-raf-1; PKS2; Proto-oncogene A-Raf; Proto-oncogene A-Raf-1; Ras-binding protein DA-Raf; Oncogene ARAF1; ARAF1; RAFA1;
Isotype	Rabbit IgG
Host	Rabbit
Calculated MW	67585

Additional Information

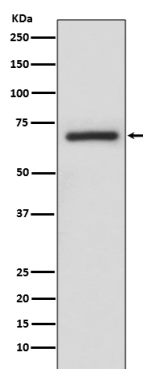
Dilution	WB 1:500~1:2000 IHC 1:50~1:200 ICC/IF 1:50~1:200 FC 1:50
Purification	Affinity-chromatography
Immunogen	A synthesized peptide derived from human A-RAF
Description	Involved in the transduction of mitogenic signals from the cell membrane to the nucleus. May also regulate the TOR signaling cascade.
Storage Condition and Buffer	Rabbit IgG in phosphate buffered saline , pH 7.4, 150mM NaCl, 0.02% sodium azide and 50% glycerol. Store at +4°C short term. Store at -20°C long term. Avoid freeze / thaw cycle.

Protein Information

Name	ARAF
Synonyms	ARAF1, PKS, PKS2
Function	Involved in the transduction of mitogenic signals from the cell membrane to the nucleus. May also regulate the TOR signaling cascade. Phosphorylates PFKFB2 (PubMed: 36402789).
Tissue Location	Predominantly in urogenital tissues.

Images

Western blot analysis of A-RAF expression in A375 cell lysate.



Please note: All products are 'FOR RESEARCH USE ONLY. NOT FOR USE IN DIAGNOSTIC OR THERAPEUTIC PROCEDURES'.