

CDCA3 Antibody

Rabbit mAb

Catalog # AP90951

Product Information

Application	WB, IF, ICC
Primary Accession	Q99618
Reactivity	Rat, Human, Mouse
Clonality	Monoclonal
Other Names	Cell division cycle-associated protein 3; Trigger of mitotic entry protein 1; TOME-1; Gene-rich cluster protein C8; CDCA3; C8; GRCC8; TOME1;
Isotype	Rabbit IgG
Host	Rabbit
Calculated MW	28998

Additional Information

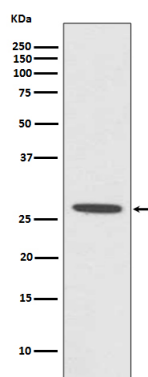
Dilution	WB 1:500~1:1000 ICC/IF 1:50~1:100
Purification	Affinity-chromatography
Immunogen	A synthesized peptide derived from human CDCA3
Description	F-box-like protein which is required for entry into mitosis. Acts by participating in E3 ligase complexes that mediate the ubiquitination and degradation of WEE1 kinase at G2/M phase (By similarity).
Storage Condition and Buffer	Rabbit IgG in phosphate buffered saline , pH 7.4, 150mM NaCl, 0.02% sodium azide and 50% glycerol. Store at +4°C short term. Store at -20°C long term. Avoid freeze / thaw cycle.

Protein Information

Name	CDCA3
Synonyms	C8, GRCC8, TOME1
Function	F-box-like protein which is required for entry into mitosis. Acts by participating in E3 ligase complexes that mediate the ubiquitination and degradation of WEE1 kinase at G2/M phase (By similarity).
Cellular Location	Cytoplasm, cytosol.

Images

Western blot analysis of CDCA3 expression in MCF7 cell lysate.



Please note: All products are 'FOR RESEARCH USE ONLY. NOT FOR USE IN DIAGNOSTIC OR THERAPEUTIC PROCEDURES'.