

NOTCH4 Antibody

Rabbit mAb

Catalog # AP90938

Product Information

Application	WB, FC
Primary Accession	Q99466
Reactivity	Human, Mouse
Clonality	Monoclonal
Other Names	NOTC4; hNotch4; INT3; Notch homolog 4;
Isotype	Rabbit IgG
Host	Rabbit
Calculated MW	209622

Additional Information

Dilution	WB 1:100~1:500 FC 1:50
Purification	Affinity-chromatography
Immunogen	A synthesized peptide derived from human NOTCH4
Description	Functions as a receptor for membrane-bound ligands Jagged1, Jagged2 and Delta1 to regulate cell-fate determination. Upon ligand activation through the released notch intracellular domain (NICD) it forms a transcriptional activator complex with RBPJ/RBPSUH and activates genes of the enhancer of split locus. Affects the implementation of differentiation, proliferation and apoptotic programs. May regulate branching morphogenesis in the developing vascular system (By similarity).
Storage Condition and Buffer	Rabbit IgG in phosphate buffered saline , pH 7.4, 150mM NaCl, 0.02% sodium azide and 50% glycerol. Store at +4°C short term. Store at -20°C long term. Avoid freeze / thaw cycle.

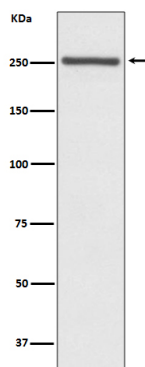
Protein Information

Name	NOTCH4 (HGNC:7884)
Synonyms	INT3
Function	Functions as a receptor for membrane-bound ligands Jagged1, Jagged2 and Delta1 to regulate cell-fate determination. Upon ligand activation through the released notch intracellular domain (NICD) it forms a transcriptional activator complex with RBPJ/RBPSUH and activates genes of the enhancer of split locus. Affects the implementation of differentiation, proliferation and apoptotic programs. May regulate branching morphogenesis in the developing vascular system (By similarity).
Cellular Location	Cell membrane; Single-pass type I membrane protein

Tissue Location

Highly expressed in the heart, moderately in the lung and placenta and at low levels in the liver, skeletal muscle, kidney, pancreas, spleen, lymph node, thymus, bone marrow and fetal liver. No expression was seen in adult brain or peripheral blood leukocytes

Images



Western blot analysis of NOTCH4 expression in Mouse lung lysate.

Please note: All products are 'FOR RESEARCH USE ONLY. NOT FOR USE IN DIAGNOSTIC OR THERAPEUTIC PROCEDURES'.