

14-3-3 Antibody

Rabbit mAb

Catalog # AP90921

Product Information

Application	WB
Primary Accession	P31946/P63104
Reactivity	Rat, Human, Mouse
Clonality	Monoclonal
Other Names	14 3 3 protein beta/alpha; 14 3 3 protein zeta; 14 3 3 zeta; 14-3-3 protein/cytosolic phospholipase A2; GW128; HS1; KCIP 1; YWHAB; YWHAD; YWHAZ;
Isotype	Rabbit IgG
Host	Rabbit
Calculated MW	28 KDa

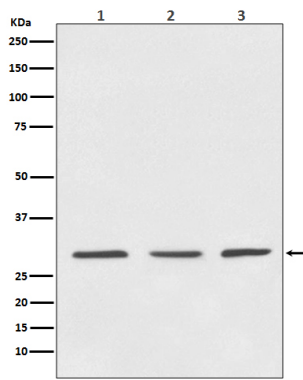
Additional Information

Dilution	WB 1:5000~1:20000
Purification	Affinity-chromatography
Immunogen	A synthesized peptide derived from human 14-3-3
Description	Adapter protein implicated in the regulation of a large spectrum of both general and specialized signaling pathways. Binds to a large number of partners, usually by recognition of a phosphoserine or phosphothreonine motif. Binding generally results in the modulation of the activity of the binding partner.
Storage Condition and Buffer	Rabbit IgG in phosphate buffered saline , pH 7.4, 150mM NaCl, 0.02% sodium azide and 50% glycerol. Store at +4°C short term. Store at -20°C long term. Avoid freeze / thaw cycle.

Protein Information

Images

Western blot analysis of 14-3-3 expression in (1) HeLa cell lysate; (2) 3T3 cell lysate; (3) PC-12 cell lysate.



Please note: All products are 'FOR RESEARCH USE ONLY. NOT FOR USE IN DIAGNOSTIC OR THERAPEUTIC PROCEDURES'.