

14-3-3 Antibody

Rabbit mAb

Catalog # AP90914

Product Information

Application	WB, IHC, FC
Primary Accession	P31946/P63104
Reactivity	Rat, Human, Mouse
Clonality	Monoclonal
Other Names	14 3 3 protein beta; 14 3 3 protein beta/alpha; 14 3 3 protein zeta; 14 3 3 zeta; GW128; HS1; KCIP 1; N-terminally processed; YWHAB; YWHAD; YWHAZ;
Isotype	Rabbit IgG
Host	Rabbit
Calculated MW	28 KDa

Additional Information

Dilution	WB 1:500~1:1000 IHC 1:50~1:200 FC 1:50
Purification	Affinity-chromatography
Immunogen	A synthesized peptide derived from human 14-3-3
Description	Adapter protein implicated in the regulation of a large spectrum of both general and specialized signaling pathways. Binds to a large number of partners, usually by recognition of a phosphoserine or phosphothreonine motif. Binding generally results in the modulation of the activity of the binding partner. Negative regulator of osteogenesis.
Storage Condition and Buffer	Rabbit IgG in phosphate buffered saline , pH 7.4, 150mM NaCl, 0.02% sodium azide and 50% glycerol. Store at +4°C short term. Store at -20°C long term. Avoid freeze / thaw cycle.

Protein Information

Images

Western blot analysis of 14-3-3 expression in Hela lysate.

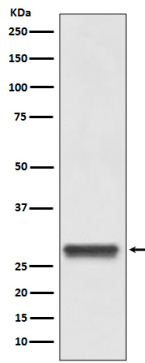


Image not found : 202311/AP90914-IHC.jpg

Immunohistochemical analysis of paraffin-embedded human breast cancer, using 14-3-3 Antibody.

Please note: All products are 'FOR RESEARCH USE ONLY. NOT FOR USE IN DIAGNOSTIC OR THERAPEUTIC PROCEDURES'.