

# Collagen VI Antibody

Rabbit mAb

Catalog # AP90911

## Product Information

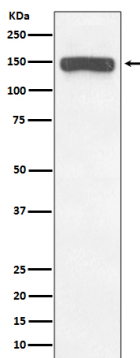
<b>Application</b>	WB, IHC, IF, ICC, IHF
<b>Primary Accession</b>	<a href="#">P12109/P12110/P12111</a>
<b>Reactivity</b>	Rat, Human, Mouse
<b>Clonality</b>	Monoclonal
<b>Other Names</b>	Alpha 1 (VI) chain (61 AA); COL6A1; COL6A2; COL6A3; Collagen alpha 2(VI) chain; Collagen alpha 3(VI) chain; OPLL; PP3610;
<b>Isotype</b>	Rabbit IgG
<b>Host</b>	Rabbit
<b>Calculated MW</b>	147 KDa

## Additional Information

<b>Dilution</b>	WB 1:1000~1:2000 IHC 1:50~1:200 ICC/IF 1:50~1:200
<b>Purification</b>	Affinity-chromatography
<b>Immunogen</b>	A synthesized peptide derived from human Collagen VI
<b>Description</b>	Collagen VI acts as a cell-binding protein.
<b>Storage Condition and Buffer</b>	Rabbit IgG in phosphate buffered saline , pH 7.4, 150mM NaCl, 0.02% sodium azide and 50% glycerol. Store at +4°C short term. Store at -20°C long term. Avoid freeze / thaw cycle.

## Protein Information

## Images



Western blot analysis of Collagen VI expression in Human brain lysate.

Image not found : 202311/AP90911-IHC.jpg

Immunohistochemical analysis of paraffin-embedded rat pancreas, using Collagen VI Antibody.

Please note: All products are 'FOR RESEARCH USE ONLY. NOT FOR USE IN DIAGNOSTIC OR THERAPEUTIC PROCEDURES'.