

MEK3/MEK6 Antibody

Rabbit mAb

Catalog # AP90875

Product Information

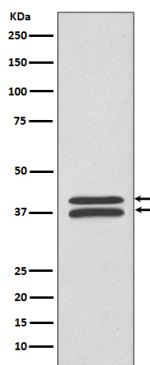
Application	WB, IHC, IF, FC, ICC, IP, IHF
Primary Accession	P46734/P52564
Reactivity	Rat, Human, Mouse
Clonality	Monoclonal
Other Names	MEK6; MKK6; MAPKK6; PRKMK6; SAPKK3; MAP2K6; MEK3; MAP kinase kinase 3; MAPKK3; MAPK/ERK kinase 3;
Isotype	Rabbit IgG
Host	Rabbit
Calculated MW	39 KDa

Additional Information

Dilution	WB 1:500~1:1000 IHC 1:50~1:200 ICC/IF 1:100~1:500 IP 1:50 FC 1:50
Purification	Affinity-chromatography
Immunogen	A synthesized peptide derived from human MEK3/MEK6
Description	Dual specificity kinase. Is activated by cytokines and environmental stress in vivo. Catalyzes the concomitant phosphorylation of a threonine and a tyrosine residue in the MAP kinase p38.
Storage Condition and Buffer	Rabbit IgG in phosphate buffered saline , pH 7.4, 150mM NaCl, 0.02% sodium azide and 50% glycerol. Store at +4°C short term. Store at -20°C long term. Avoid freeze / thaw cycle.

Protein Information

Images



Western blot analysis of MEK3/MEK6 expression in HeLa cell lysate.

Image not found : 202311/AP90875-IHC.jpg

Immunohistochemical analysis of paraffin-embedded mouse spleen, using MEK3/MEK6 Antibody.

Image not found : 202311/AP90875-IF.jpg

Immunofluorescent analysis of Hela cells, using MEK3/MEK6 Antibody.

Please note: All products are 'FOR RESEARCH USE ONLY. NOT FOR USE IN DIAGNOSTIC OR THERAPEUTIC PROCEDURES'.