

Calnexin Antibody

Rabbit mAb

Catalog # AP90839

Product Information

Application	WB, IHC, IF, FC, ICC, IHF
Primary Accession	P27824
Reactivity	Rat, Human
Clonality	Monoclonal
Other Names	Calnexin; CANX; CNX; IP90; Major histocompatibility complex class I antigen-binding protein p88; p90;
Isotype	Rabbit IgG
Host	Rabbit
Calculated MW	90 KDa

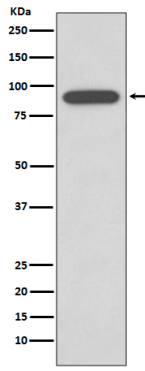
Additional Information

Dilution	WB 1:1000~1:2000 IHC 1:100~1:500 ICC/IF 1:50~1:200 FC 1:100
Purification	Affinity-chromatography
Immunogen	A synthesized peptide derived from human Calnexin
Description	Calnexin is a calcium-binding protein embedded in the ER membrane that retains the newly synthesized glycoproteins inside the ER to ensure proper folding and quality control (3-5). The specificity of calnexin for a subset of glycoproteins is defined by a lectin site, which binds an early oligosaccharide intermediate on the folding glycoprotein.
Storage Condition and Buffer	Rabbit IgG in phosphate buffered saline , pH 7.4, 150mM NaCl, 0.02% sodium azide and 50% glycerol. Store at +4°C short term. Store at -20°C long term. Avoid freeze / thaw cycle.

Protein Information

Images

Western blot analysis of Calnexin expression in HepG2 cell lysate.



Please note: All products are 'FOR RESEARCH USE ONLY. NOT FOR USE IN DIAGNOSTIC OR THERAPEUTIC PROCEDURES'.