

Cyclin A1/A2 Antibody

Rabbit mAb

Catalog # AP90838

Product Information

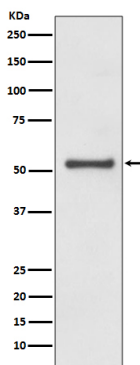
Application	WB, IHC, IP
Primary Accession	P20248/P78396
Reactivity	Human
Clonality	Monoclonal
Other Names	CCN1; CCNA; CCNA1; CCNA2; CT146; Cyclin-A; Cyclin-A1; Cyclin-A2;
Isotype	Rabbit IgG
Host	Rabbit
Calculated MW	52 KDa

Additional Information

Dilution	WB 1:500~1:1000 IHC 1:100~1:500 IP 1:50
Purification	Affinity-chromatography
Immunogen	A synthesized peptide derived from human Cyclin A1/A2
Description	May primarily function in the control of the germline meiotic cell cycle and additionally in the control of mitotic cell cycle in some somatic cells. Essential for the control of the cell cycle at the G1/S (start) and the G2/M (mitosis) transitions.
Storage Condition and Buffer	Rabbit IgG in phosphate buffered saline , pH 7.4, 150mM NaCl, 0.02% sodium azide and 50% glycerol. Store at +4°C short term. Store at -20°C long term. Avoid freeze / thaw cycle.

Protein Information

Images



Western blot analysis of Cyclin A1/A2 expression in HeLa cell lysate.

Image not found : 202311/AP90838-IHC.jpg

Immunohistochemical analysis of paraffin-embedded human colon cancer, using Cyclin A1/A2 Antibody.

Please note: All products are 'FOR RESEARCH USE ONLY. NOT FOR USE IN DIAGNOSTIC OR THERAPEUTIC PROCEDURES'.