

Cyclin B2 Antibody

Rabbit mAb

Catalog # AP90831

Product Information

Application	WB, IHC, IF, ICC, IP, IHF
Primary Accession	O95067
Reactivity	Rat, Human, Mouse
Clonality	Monoclonal
Other Names	ccnb2; CycB2; Cyclin B2; G2/mitotic specific cyclin B2;
Isotype	Rabbit IgG
Host	Rabbit
Calculated MW	45282

Additional Information

Dilution	WB 1:500~1:1000 IHC 1:50~1:200 ICC/IF 1:50~1:200 IP 1:50
Purification	Affinity-chromatography
Immunogen	A synthesized peptide derived from human Cyclin B2
Description	Cyclin B2 is a member of the cyclin family, specifically the B-type cyclins. The B-type cyclins, B1 and B2, associate with p34cdc2 and are essential components of the cell cycle regulatory machinery. Essential for the control of the cell cycle at the G2/M (mitosis) transition.
Storage Condition and Buffer	Rabbit IgG in phosphate buffered saline , pH 7.4, 150mM NaCl, 0.02% sodium azide and 50% glycerol. Store at +4°C short term. Store at -20°C long term. Avoid freeze / thaw cycle.

Protein Information

Name	CCNB2
Function	Essential for the control of the cell cycle at the G2/M (mitosis) transition.

Images

Western blot analysis of Cyclin B2 expression in HeLa cell lysate.

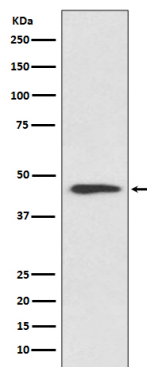


Image not found : 202311/AP90831-IHC.jpg

Immunohistochemical analysis of paraffin-embedded human colon, using Cyclin B2 Antibody.

Please note: All products are 'FOR RESEARCH USE ONLY. NOT FOR USE IN DIAGNOSTIC OR THERAPEUTIC PROCEDURES'.