

IRS1 Antibody

Rabbit mAb

Catalog # AP90830

Product Information

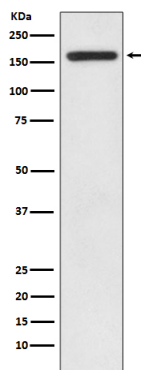
Application	WB, IHC, IF, ICC, IHF
Primary Accession	P35568
Reactivity	Human
Clonality	Monoclonal
Other Names	HIRS1; Insulin receptor substrate 1; IRS 1; IRS1;
Isotype	Rabbit IgG
Host	Rabbit
Calculated MW	170 KDa

Additional Information

Dilution	WB 1:1000~1:2000 IHC 1:50~1:200 ICC/IF 1:50~1:200
Purification	Affinity-chromatography
Immunogen	A synthesized peptide derived from human IRS1
Description	IRS1 is one of the major substrates of the insulin receptor kinase. May mediate the control of various cellular processes by insulin. When phosphorylated by the insulin receptor binds specifically to various cellular proteins containing SH2 domains such as phosphatidylinositol 3-kinase p85 subunit or GRB2.
Storage Condition and Buffer	Rabbit IgG in phosphate buffered saline , pH 7.4, 150mM NaCl, 0.02% sodium azide and 50% glycerol. Store at +4°C short term. Store at -20°C long term. Avoid freeze / thaw cycle.

Protein Information

Images



Western blot analysis of IRS1 expression in HEK293 cell lysate.

Please note: All products are 'FOR RESEARCH USE ONLY. NOT FOR USE IN DIAGNOSTIC OR THERAPEUTIC PROCEDURES'.