

IRF6 Antibody

Rabbit mAb

Catalog # AP90818

Product Information

Application	WB, IHC, IF, ICC, IHF
Primary Accession	O14896
Reactivity	Rat, Human, Mouse
Clonality	Monoclonal
Other Names	Interferon regulatory factor 6; IRF 6; LPS;OFC 6; PIT; PPS; PPS1; VWS; VWS1;
Isotype	Rabbit IgG
Host	Rabbit
Calculated MW	53130

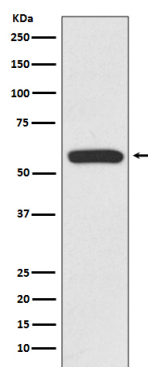
Additional Information

Dilution	WB 1:1000~1:2000 IHC 1:50~1:200 ICC/IF 1:50~1:200
Purification	Affinity-chromatography
Immunogen	A synthesized peptide derived from human IRF6
Description	Play an important role in pathogen defense, autoimmunity, lymphocyte development, cell growth, and susceptibility to transformation. Plays a role in regulating mammary epithelial cell proliferation (By similarity). May regulate WDR65 transcription.
Storage Condition and Buffer	Rabbit IgG in phosphate buffered saline , pH 7.4, 150mM NaCl, 0.02% sodium azide and 50% glycerol. Store at +4°C short term. Store at -20°C long term. Avoid freeze / thaw cycle.

Protein Information

Name	IRF6
Function	Probable DNA-binding transcriptional activator. Key determinant of the keratinocyte proliferation-differentiation switch involved in appropriate epidermal development (By similarity). Plays a role in regulating mammary epithelial cell proliferation (By similarity). May regulate WDR65 transcription (By similarity).
Cellular Location	Nucleus. Cytoplasm Note=Translocates to nucleus in response to an activating signal
Tissue Location	Expressed in normal mammary epithelial cells. Expression is reduced or absent in breast carcinomas

Images



Western blot analysis of IRF6 expression in Jurkat cell lysate.

Please note: All products are 'FOR RESEARCH USE ONLY. NOT FOR USE IN DIAGNOSTIC OR THERAPEUTIC PROCEDURES'.